

SP1 (Phospho Thr739) Rabbit pAb

CatalogNo: YP0248 **Orthogonal Validated** 

Key Features

Host Species

- Rabbit

Reactivity

- Human, Mouse, Rat, Monkey

Applications

- WB, IHC, IF, ELISA

MW

- 81kD (Observed)

Isotype

- IgG

Storage

Storage* -15°C to -25°C/1 year (Do not lower than -25°C)**Formulation** Liquid in PBS containing 50% glycerol, 0.5% BSA and 0.02% sodium azide.

Recommended Dilution Ratios

WB 1:500-1:2000**IHC 1:100-1:300****ELISA 1:5000****IF 1:50-200**

Basic Information

Clonality Polyclonal

Immunogen Information

Immunogen The antiserum was produced against synthesized peptide derived from human SP1 around the phosphorylation site of Thr739. AA range: 706-755

Specificity

Phospho-SP1 (T739) Polyclonal Antibody detects endogenous levels of SP1 protein only when phosphorylated at T739. The name of modified sites may be influenced by many factors, such as species (the modified site was not originally found in human samples) and the change of protein sequence (the previous protein sequence is incomplete, and the protein sequence may be prolonged with the development of protein sequencing technology). When naming, we will use the "numbers" in historical reference to keep the sites consistent with the reports. The antibody binds to the following modification sequence (lowercase letters are modification sites):TAtPS

| Target Information

Gene name SP1

Protein Name Transcription factor Sp1

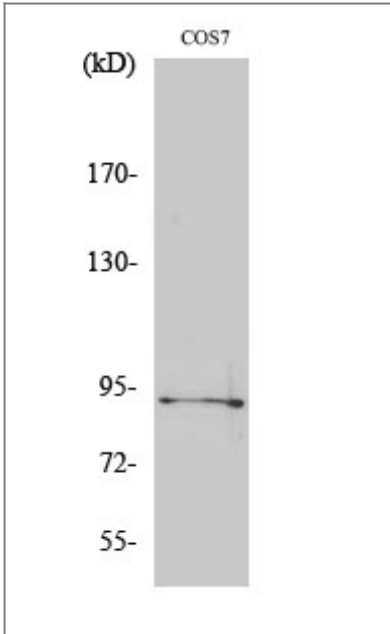
Organism	Gene ID	UniProt ID
Human	6667 ;	P08047 ;
Mouse	20683 ;	O89090 ;
Rat	24790 ;	Q01714 ;

Cellular Localization Nucleus. Cytoplasm. Nuclear location is governed by glycosylated/phosphorylated states. Insulin promotes nuclear location, while glucagon favors cytoplasmic location.

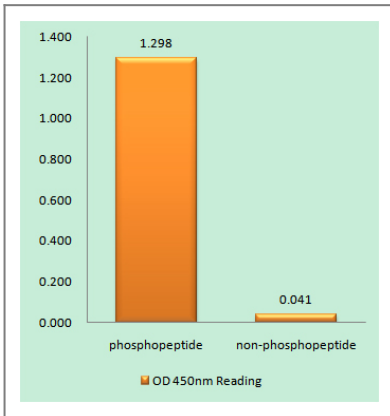
Tissue specificity Up-regulated in adenocarcinomas of the stomach (at protein level). Isoform 3 is ubiquitously expressed at low levels.

Function Function: Binds to GC box promoters elements and selectively activates mRNA synthesis from genes that contain functional recognition sites. Can interact with G/C-rich motifs from serotonin receptor promoter.,PTM: O-glycosylated; contains N-acetylglucosamine side chains.,similarity: Belongs to the Sp1 C2H2-type zinc-finger protein family.,similarity: Contains 3 C2H2-type zinc fingers.,subunit: Interacts with ATF7IP, ATF7IP2, POGZ, HCFC1, AATF and PHC2. Interacts with varicella-zoster virus IE62 protein and HIV-1 Vpr. Interacts with SV40 VP2/3 proteins. Interacts with SV40 major capsid protein VP1; this interaction leads to a cooperativity between the two proteins in DNA binding.,

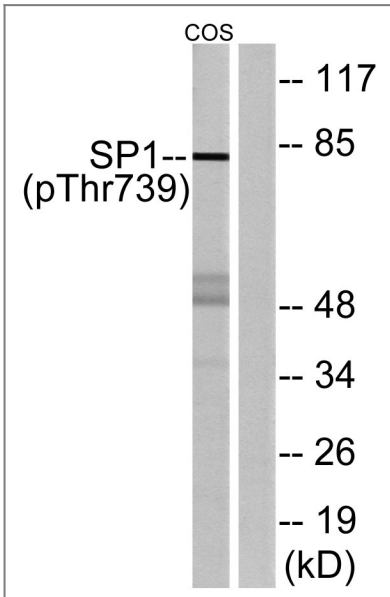
| Validation Data



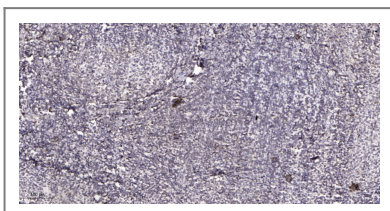
Western Blot analysis of various cells using Phospho-Sp1 (T739) Polyclonal Antibody diluted at 1:1000



Enzyme-Linked Immunosorbent Assay (Phospho-ELISA) for Immunogen Phosphopeptide (Phospho-left) and Non-Phosphopeptide (Phospho-right), using SP1 (Phospho-Thr739) Antibody



Western blot analysis of lysates from COS7 cells treated with serum 20% 15', using SP1 (Phospho-Thr739) Antibody. The lane on the right is blocked with the phospho peptide.



Immunohistochemical analysis of paraffin-embedded human tonsil. 1, Antibody was diluted at 1:200 (4°C overnight). 2, Tris-EDTA, pH9.0 was used for antigen retrieval. 3, Secondary antibody was diluted at 1:200 (room temperature, 45min).

| Contact information

Orders: order@immunoway.com
Support: tech@immunoway.com
Telephone: 877-594-3616 (Toll Free), 408-747-0185
Website: <http://www.immunoway.com>
Address: 2200 Ringwood Ave San Jose, CA 95131 USA



Please scan the QR code to access additional product information:
SP1 (Phospho Thr739) Rabbit pAb

For Research Use Only. Not for Use in Diagnostic Procedures.

[Antibody](#) | [ELISA Kits](#) | [Protein](#) | [Reagents](#)