

## PKC (Phospho Thr497) Rabbit pAb

CatalogNo: YP0227 Orthogonal Validated 

### Key Features

#### Host Species

- Rabbit

#### Reactivity

- Human, Mouse, Rat

#### Applications

- WB, IHC, IF, ELISA

#### MW

- 83kD (Observed)

#### Isotype

- IgG

### Storage

**Storage\*** -15°C to -25°C/1 year (Do not lower than -25°C)

**Formulation** Liquid in PBS containing 50% glycerol, 0.5% BSA and 0.02% sodium azide.

### Recommended Dilution Ratios

**WB 1:500-1:2000**

**IHC 1:100-1:300**

**IF 1:200-1:1000**

**ELISA 1:40000**

**Not yet tested in other applications.**

### Basic Information

**Clonality** Polyclonal

### Immunogen Information

**Immunogen** The antiserum was produced against synthesized peptide derived from human PKC-pan around the phosphorylation site of Thr497. AA range: 623-672

## Specificity

Phospho-PKC (T497) Polyclonal Antibody detects endogenous levels of PKC protein only when phosphorylated at T497. The name of modified sites may be influenced by many factors, such as species (the modified site was not originally found in human samples) and the change of protein sequence (the previous protein sequence is incomplete, and the protein sequence may be prolonged with the development of protein sequencing technology). When naming, we will use the "numbers" in historical reference to keep the sites consistent with the reports. The antibody binds to the following modification sequence (lowercase letters are modification sites):TStFC

## Target Information

**Gene name** PRKCA/PRKCB/PRKCD/PRKCE/PRKCG/PRKCH/PRKCQ/PRKCZ

**Protein Name** Protein kinase C alpha type/Protein kinase C beta type/Protein kinase C delta type/Protein kinase C epsilon type/Protein kinase C gamma type/Protein kinase C eta type/Protein kinase C theta type/Protein kinase C zeta type

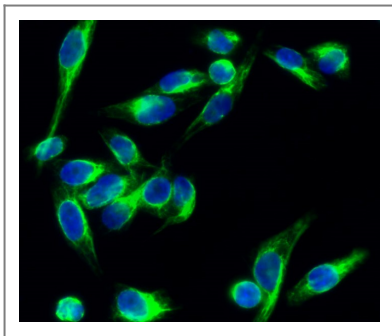
Organism	Gene ID	UniProt ID
Human	<a href="#">5578</a> ; <a href="#">5579</a> ; <a href="#">5580</a> ; <a href="#">5581</a> ; <a href="#">5582</a> ; <a href="#">5583</a> ; <a href="#">5588</a> ; <a href="#">5590</a> ;	<a href="#">P17252</a> ; <a href="#">P05771</a> ; <a href="#">Q05655</a> ; <a href="#">Q02156</a> ; <a href="#">P05129</a> ; <a href="#">P24723</a> ; <a href="#">Q04759</a> ; <a href="#">Q05513</a> ;
Mouse	<a href="#">18750</a> ; <a href="#">18751</a> ; <a href="#">18753</a> ; <a href="#">18754</a> ;	
Rat	<a href="#">25023</a> ; <a href="#">170538</a> ; <a href="#">29340</a> ;	<a href="#">P05696</a> ; <a href="#">P68403</a> ; <a href="#">P09215</a> ; <a href="#">P09216</a> ;

**Cellular Localization** Cytoplasm . Cell membrane ; Peripheral membrane protein . Mitochondrion membrane ; Peripheral membrane protein . Nucleus .

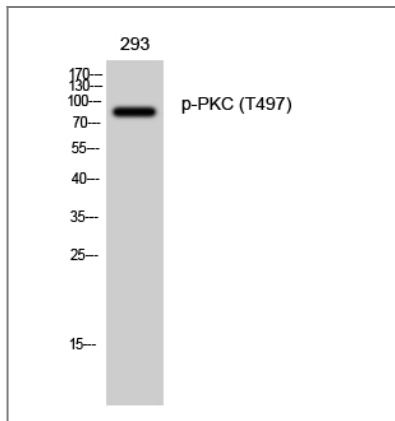
**Tissue specificity** Blood,Brain,Epithelium,Lung,Platelet,

**Function** Catalytic activity:ATP + a protein = ADP + a phosphoprotein.,cofactor:Binds 3 calcium ions per subunit. The ions are bound to the C2 domain.,Function:PKC is activated by diacylglycerol which in turn phosphorylates a range of cellular proteins. PKC also serves as the receptor for phorbol esters, a class of tumor promoters.,Function:This is a calcium-activated, phospholipid-dependent, serine- and threonine-specific enzyme. May play a role in cell motility by phosphorylating CSPG4.,similarity:Belongs to the protein kinase superfamily.,similarity:Belongs to the protein kinase superfamily. AGC Ser/Thr protein kinase family. PKC subfamily.,similarity:Contains 1 AGC-kinase C-terminal domain.,similarity:Contains 1 C2 domain.,similarity:Contains 1 protein kinase domain.,similarity:Contains 2 phorbol-ester/DAG-type zinc fingers.,subunit:Interacts with ADAP1/CENTA1, CSPG4 and PRKCABP. Binds to SDPR in the presence of phosphatidylserine.,

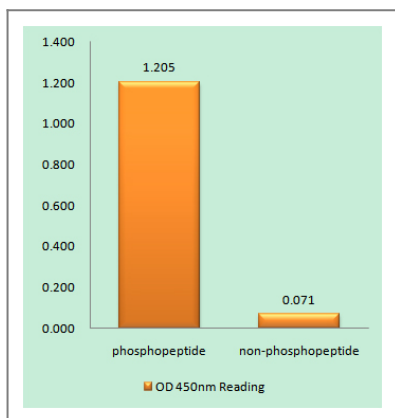
## Validation Data



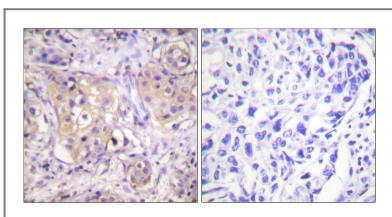
Immunofluorescence analysis of HeLa cell. 1, PKC (phospho Thr497) Polyclonal Antibody (green) was diluted at 1:200 (4°C overnight). 2, Goat Anti Rabbit Alexa Fluor 488 Catalog:RS3211 was diluted at 1:1000 (room temperature, 50min). 3 DAPI (blue) 10min.



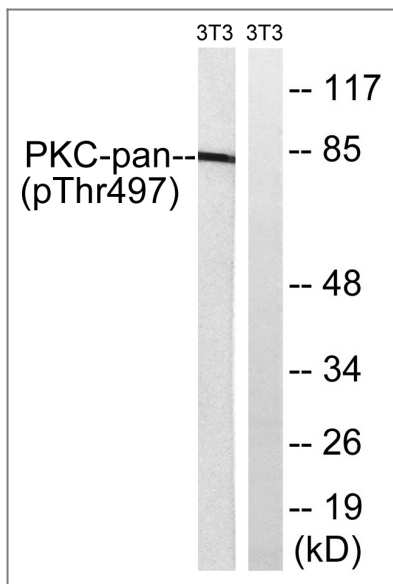
Western Blot analysis of 293 cells using Phospho-PKC (T497) Polyclonal Antibody diluted at 1:500



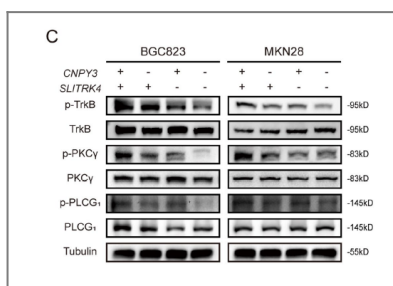
Enzyme-Linked Immunosorbent Assay (Phospho-ELISA) for Immunogen Phosphopeptide (Phospho-left) and Non-Phosphopeptide (Phospho-right), using PKC-pan (Phospho-Thr497) Antibody



Immunohistochemistry analysis of paraffin-embedded human breast carcinoma, using PKC-pan (Phospho-Thr497) Antibody. The picture on the right is blocked with the phospho peptide.



Western blot analysis of lysates from NIH/3T3 cells treated with PMA 250ng/ml 15', using PKC-pan (Phospho-Thr497) Antibody. The lane on the right is blocked with the phospho peptide.



The SLITRK4-CNPY3 axis promotes liver metastasis of gastric cancer by enhancing the endocytosis and recycling of TrkB in tumour cells CELLULAR ONCOLOGY Li Jun WB Human BGC823 cell, MKN28 cell

## Contact information

Orders: [order@immunoway.com](mailto:order@immunoway.com)  
 Support: [tech@immunoway.com](mailto:tech@immunoway.com)  
 Telephone: 877-594-3616 (Toll Free), 408-747-0185  
 Website: <http://www.immunoway.com>  
 Address: 2200 Ringwood Ave San Jose, CA 95131 USA



Please scan the QR code to access additional product information:  
**PKC (Phospho Thr497) Rabbit pAb**

For Research Use Only. Not for Use in Diagnostic Procedures.

[Antibody](#) | [ELISA Kits](#) | [Protein](#) | [Reagents](#)