

p70 S6 kinase α (Phospho Thr444) Rabbit pAb

CatalogNo: YP0217

Orthogonal Validated 

Key Features

Host Species

- Rabbit

Reactivity

- Human, Mouse, Rat

Applications

- WB, IHC, IF, ELISA

MW

- 70kD (Observed)

Isotype

- IgG

Recommended Dilution Ratios

WB 1:500-1:2000**IHC 1:100-1:300****IF 1:200-1:1000****ELISA 1:40000****Not yet tested in other applications.**

Storage

Storage*

-15°C to -25°C/1 year (Do not lower than -25°C)

Formulation

Liquid in PBS containing 50% glycerol, 0.5% BSA and 0.02% sodium azide.

Basic Information

Clonality

Polyclonal

Immunogen Information

Immunogen

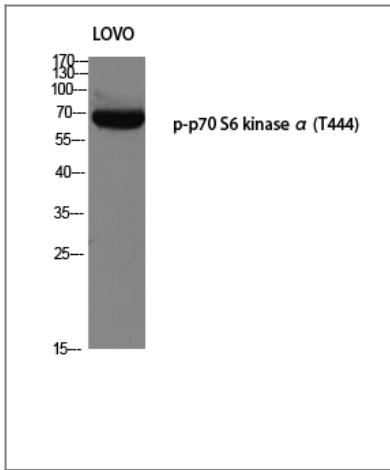
The antiserum was produced against synthesized peptide derived from human p70 S6 Kinase around the phosphorylation site of Thr444. AA range: 411-460

Specificity Phospho-p70 S6 kinase α (T444) Polyclonal Antibody detects endogenous levels of p70 S6 kinase α protein only when phosphorylated at T444. The name of modified sites may be influenced by many factors, such as species (the modified site was not originally found in human samples) and the change of protein sequence (the previous protein sequence is incomplete, and the protein sequence may be prolonged with the development of protein sequencing technology). When naming, we will use the "numbers" in historical reference to keep the sites consistent with the reports. The antibody binds to the following modification sequence (lowercase letters are modification sites):PRtPV

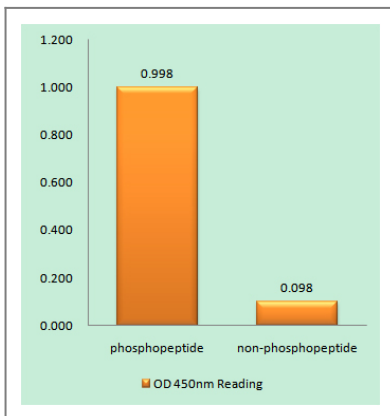
| Target Information

Gene name	RPS6KB1 STK14A P70S6K		
Protein Name	Ribosomal protein S6 kinase beta-1		
	Organism	Gene ID	UniProt ID
	Human	6198 ;	P23443 ;
	Mouse	72508 ;	Q8BSK8 ;
	Rat	83840 ;	P67999 ;
Cellular Localization	Cell junction, synapse, synaptosome . Mitochondrion outer membrane. Mitochondrion. Colocalizes with URI1 at mitochondrion.; [Isoform Alpha I]: Nucleus. Cytoplasm.; [Isoform Alpha II]: Cytoplasm.		
Tissue specificity	Widely expressed.		
Function	Catalytic activity:ATP + a protein = ADP + a phosphoprotein.,enzyme regulation:Activation by serine/threonine phosphorylation and protein kinase C, inactivated by type 2A phosphatase.,Function:Phosphorylates specifically ribosomal protein S6 in response to insulin or several classes of mitogens.,similarity:Belongs to the protein kinase superfamily.,similarity:Belongs to the protein kinase superfamily. AGC Ser/Thr protein kinase family. S6 kinase subfamily.,similarity:Contains 1 AGC-kinase C-terminal domain.,similarity:Contains 1 protein kinase domain.,subunit:Interacts with PPP1R9A/neurabin-1.,tissue specificity:Widely expressed.,		

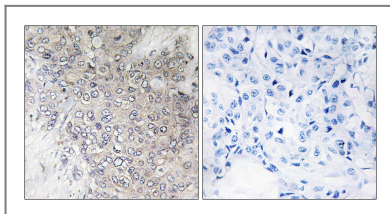
| Validation Data



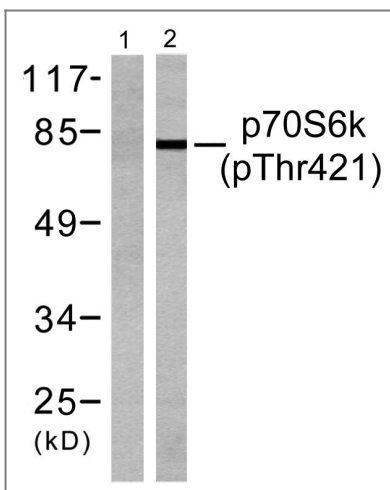
Western blot analysis of LOVO using p-p70 S6 kinase α (T444) antibody. Antibody was diluted at 1:500



Enzyme-Linked Immunosorbent Assay (Phospho-ELISA) for Immunogen Phosphopeptide (Phospho-left) and Non-Phosphopeptide (Phospho-right), using p70 S6 Kinase (Phospho-Thr421) Antibody



Immunohistochemistry analysis of paraffin-embedded human breast carcinoma, using p70 S6 Kinase (Phospho-Thr421) Antibody. The picture on the right is blocked with the phospho peptide.



Western blot analysis of lysates from NIH/3T3 cells treated with EGF 200ng/ml 30', using p70 S6 Kinase (Phospho-Thr421) Antibody. The lane on the left is blocked with the phospho peptide.

Contact information

Orders: order@immunoway.com
Support: tech@immunoway.com
Telephone: 877-594-3616 (Toll Free), 408-747-0185
Website: <http://www.immunoway.com>
Address: 2200 Ringwood Ave San Jose, CA 95131 USA



Please scan the QR code
to access additional
product information:
p70 S6 kinase α
(Phospho Thr444)
Rabbit pAb

For Research Use Only. Not for Use in Diagnostic Procedures.

[Antibody](#) | [ELISA Kits](#) | [Protein](#) | [Reagents](#)