

## p38 (Phospho Tyr182) Rabbit pAb

CatalogNo: YP0203 Orthogonal Validated 

### Key Features

#### Host Species

- Rabbit

#### Reactivity

- Human, Mouse, Rat

#### Applications

- WB, IHC, IF, ELISA

#### MW

- 38kD (Observed)

#### Isotype

- IgG

### Storage

**Storage\*** -15°C to -25°C/1 year (Do not lower than -25°C)

**Formulation** Liquid in PBS containing 50% glycerol, 0.5% BSA and 0.02% sodium azide.

### Recommended Dilution Ratios

**WB 1:500-1:2000**

**IHC 1:100-1:300**

**ELISA 1:10000**

**IF 1:50-200**

### Basic Information

**Clonality** Polyclonal

### Immunogen Information

**Immunogen** The antiserum was produced against synthesized peptide derived from human p38 MAPK around the phosphorylation site of Tyr182. AA range:147-196

## Specificity

Phospho-p38 (Y182) Polyclonal Antibody detects endogenous levels of p38 protein only when phosphorylated at Y182. The name of modified sites may be influenced by many factors, such as species (the modified site was not originally found in human samples) and the change of protein sequence (the previous protein sequence is incomplete, and the protein sequence may be prolonged with the development of protein sequencing technology). When naming, we will use the "numbers" in historical reference to keep the sites consistent with the reports. The antibody binds to the following modification sequence (lowercase letters are modification sites):TGyVA

## Target Information

**Gene name** MAPK14

**Protein Name** Mitogen-activated protein kinase 14

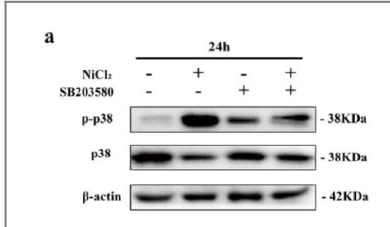
Organism	Gene ID	UniProt ID
Human	<a href="#">1432</a> ;	<a href="#">Q16539</a> ;
Mouse	<a href="#">26416</a> ;	<a href="#">P47811</a> ;
Rat		<a href="#">P70618</a> ;

**Cellular Localization** Cytoplasm . Nucleus .

**Tissue specificity** Brain, heart, placenta, pancreas and skeletal muscle. Expressed to a lesser extent in lung, liver and kidney.

**Function** Catalytic activity:ATP + a protein = ADP + a phosphoprotein.,cofactor:Magnesium.,Domain:The TXY motif contains the threonine and tyrosine residues whose phosphorylation activates the MAP kinases.,enzyme regulation:Activated by threonine and tyrosine phosphorylation by either of two dual specificity kinases, MAP2K3 or MAP2K6, and potentially also MAP2K4. Inhibited by dual specificity phosphatases, such as DUSP1. Specifically inhibited by the binding of pyridinyl-imidazole compounds, which are cytokine-suppressive anti-inflammatory drugs (CSAID). Isoform Mxi2 is 100-fold less sensitive to these agents than the other isoforms and is not inhibited by DUSP1. Isoform Exip is not activated by MAP2K6.,Function:Responds to activation by environmental stress, pro-inflammatory cytokines and lipopolysaccharide (LPS) by phosphorylating a number of transcription factors, such as ELK1 and ATF2 and several downstream kinases, such as MAPKAPK2 and MAPKAPK5. Plays a critical role in the production of some cytokines, for example IL-6. May play a role in stabilization of EPO mRNA during hypoxic stress. Isoform Mxi2 activation is stimulated by mitogens and oxidative stress and only poorly phosphorylates ELK1 and ATF2. Isoform Exip may play a role in the early onset of apoptosis.,online information:P38 mitogen-activated protein kinases entry,PTM:Dually phosphorylated on Thr-180 and Tyr-182, which activates the enzyme.,PTM:Phosphorylated upon DNA damage, probably by ATM or ATR.,similarity:Belongs to the protein kinase superfamily. CMGC Ser/Thr protein kinase family. MAP kinase subfamily.,similarity:Contains 1 protein kinase domain.,subunit:Binds to a kinase interaction motif within the protein tyrosine phosphatase, PTPRR. This interaction retains MAPK14 in the cytoplasm and prevents nuclear accumulation. Interacts with SPAG9 (By similarity). Interacts with NP60 and FAM48A.,tissue specificity:Brain, heart, placenta, pancreas and skeletal muscle. Expressed to a lesser extent in lung, liver and kidney.,

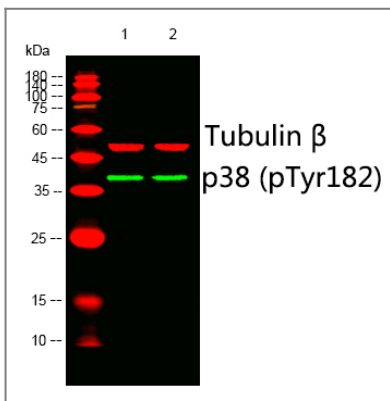
## Validation Data



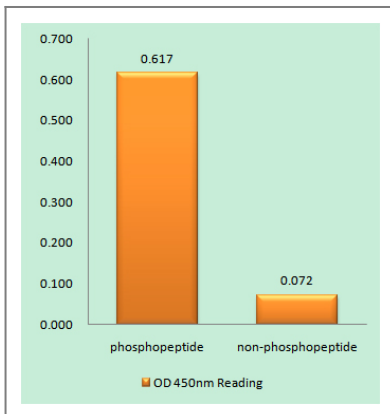
Nickel induces blood-testis barrier damage through ROS-mediated p38 MAPK pathways in mice. Redox Biology Hongrui Guo IF, WB Mouse testis tissue TM4 cell



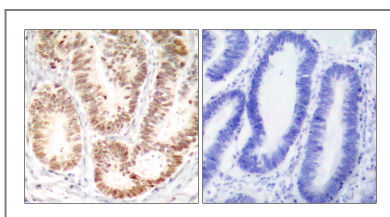
Li, Lin, et al. "Telekin suppresses human hepatocellular carcinoma cells in vitro by inducing G 2/M phase arrest via the p38 MAPK signaling pathway." Acta Pharmacologica Sinica 35.10 (2014): 1311.



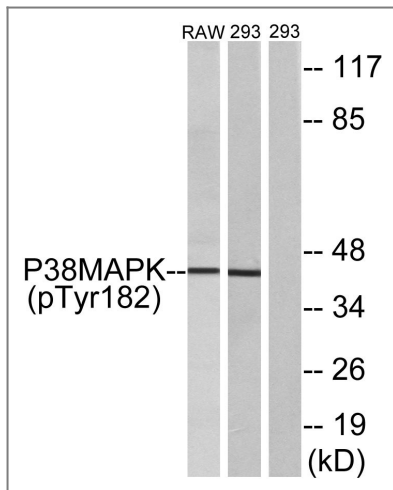
Western blot analysis of lysates from 1) PC-3, 2) MCF-7 cells, (Green) primary antibody was diluted at 1:1000, 4°C over night, Dylight 800 secondary antibody (Immunoway:RS23920)was diluted at 1:10000, 37° 1hour. (Red) Tubulin β Monoclonal Antibody (5G3) (Immunoway:YM3030) antibody was diluted at 1:5000 as loading control, 4°C over night,Dylight 680 secondary antibody (Immunoway:RS23710)was diluted at 1:10000, 37° 1hour.



Enzyme-Linked Immunosorbent Assay (Phospho-ELISA) for Immunogen Phosphopeptide (Phospho-left) and Non-Phosphopeptide (Phospho-right), using p38 MAPK (Phospho-Tyr182) Antibody



Immunohistochemistry analysis of paraffin-embedded human colon carcinoma, using p38 MAPK (Phospho-Tyr182) Antibody. The picture on the right is blocked with the phospho peptide.



Western blot analysis of lysates from RAW264.7 cells and 293 cells, using p38 MAPK (Phospho-Tyr182) Antibody. The lane on the right is blocked with the phospho peptide.

## Contact information

Orders: [order@immunoway.com](mailto:order@immunoway.com)  
 Support: [tech@immunoway.com](mailto:tech@immunoway.com)  
 Telephone: 877-594-3616 (Toll Free), 408-747-0185  
 Website: <http://www.immunoway.com>  
 Address: 2200 Ringwood Ave San Jose, CA 95131 USA



Please scan the QR code to access additional product information:

**p38 (Phospho Tyr182) Rabbit pAb**

For Research Use Only. Not for Use in Diagnostic Procedures.

[Antibody](#) | [ELISA Kits](#) | [Protein](#) | [Reagents](#)