

p21 (Phospho Thr145) Rabbit pAb

CatalogNo: YP0200 **Orthogonal Validated** 

Key Features

Host Species

- Rabbit

Reactivity

- Human, Mouse, Rat

Applications

- WB, IHC, IF, ELISA

MW

- 18kD (Calculated)

Isotype

- IgG

Storage

Storage* -15°C to -25°C/1 year (Do not lower than -25°C)**Formulation** Liquid in PBS containing 50% glycerol, 0.5% BSA and 0.02% sodium azide.

Recommended Dilution Ratios

WB 1:500-1:2000**IHC 1:100-1:300****ELISA 1:10000****IF 1:50-200**

Basic Information

Clonality Polyclonal

Immunogen Information

Immunogen The antiserum was produced against synthesized peptide derived from human p21 Cip1 around the phosphorylation site of Thr145. AA range:111-160

Specificity

Phospho-p21 (T145) Polyclonal Antibody detects endogenous levels of p21 protein only when phosphorylated at T145. The name of modified sites may be influenced by many factors, such as species (the modified site was not originally found in human samples) and the change of protein sequence (the previous protein sequence is incomplete, and the protein sequence may be prolonged with the development of protein sequencing technology). When naming, we will use the "numbers" in historical reference to keep the sites consistent with the reports. The antibody binds to the following modification sequence (lowercase letters are modification sites):RQtSM

| Target Information

Gene name CDKN1A CAP20 CDKN1 CIP1 MDA6 PIC1 SDI1 WAF1

Protein Name Cyclin-dependent kinase inhibitor 1

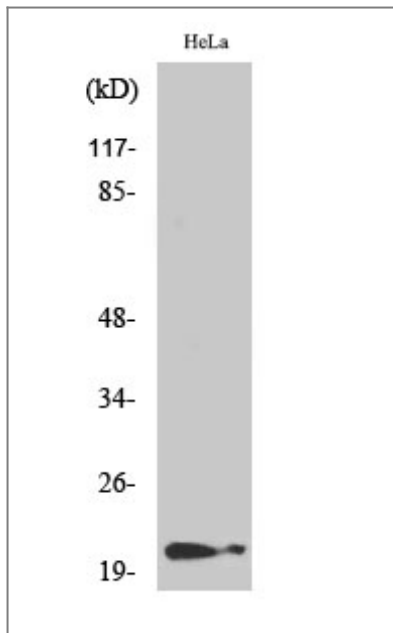
Organism	Gene ID	UniProt ID
Human	1026;	P38936;
Mouse	12575;	P39689;

Cellular Localization Cytoplasm . Nucleus .

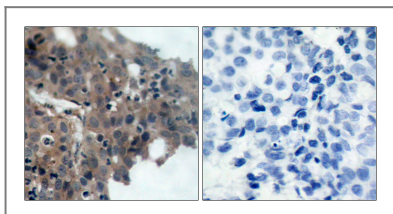
Tissue specificity Expressed in all adult tissues, with 5-fold lower levels observed in the brain.

Function Function:May be the important intermediate by which p53 mediates its role as an inhibitor of cellular proliferation in response to DNA damage. Binds to and inhibits cyclin-dependent kinase activity, preventing phosphorylation of critical cyclin-dependent kinase substrates and blocking cell cycle progression.,induction:By p53, mezerein (antileukemic compound) and interferon beta.,PTM:Phosphorylation of Thr-145 by Akt or of Ser-146 by PKC impairs binding to PCNA.,similarity:Belongs to the CDI family.,tissue specificity:Expressed in all adult human tissues, with 5-fold lower levels observed in the brain.,

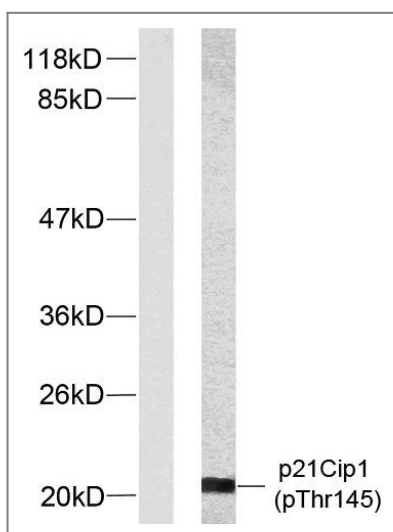
| Validation Data



Western Blot analysis of various cells using Phospho-p21 (T145) Polyclonal Antibody



Immunohistochemistry analysis of paraffin-embedded human breast carcinoma, using p21 Cip1 (Phospho-Thr145) Antibody. The picture on the right is blocked with the phospho peptide.



Western blot analysis of lysates from HeLa cells treated with EGF, using p21 Cip1 (Phospho-Thr145) Antibody. The lane on the left is blocked with the phospho peptide.

Contact information

Orders: order@immunoway.com
 Support: tech@immunoway.com
 Telephone: 877-594-3616 (Toll Free), 408-747-0185
 Website: <http://www.immunoway.com>
 Address: 2200 Ringwood Ave San Jose, CA 95131 USA



Please scan the QR code to access additional product information:
p21 (Phospho Thr145) Rabbit pAb

