

LIMK-2 (Phospho Thr505) Rabbit pAb

CatalogNo: YP0162 **Orthogonal Validated** 

Key Features

Host Species

- Rabbit

Reactivity

- Human, Mouse, Rat

Applications

- WB, IHC, IF, ELISA

MW

- 72kD (Calculated)

Isotype

- IgG

Storage

Storage* -15°C to -25°C/1 year (Do not lower than -25°C)**Formulation** Liquid in PBS containing 50% glycerol, 0.5% BSA and 0.02% sodium azide.

Recommended Dilution Ratios

WB 1:500-1:2000**IHC 1:100-1:300****IF 1:200-1:1000****ELISA 1:10000****Not yet tested in other applications.**

Basic Information

Clonality Polyclonal

Immunogen Information

Immunogen Synthesized phospho-peptide around the phosphorylation site of human LIMK-2 (phospho Thr505)

Specificity

Phospho-LIMK-2 (T505) Polyclonal Antibody detects endogenous levels of LIMK-2 protein only when phosphorylated at T505. The name of modified sites may be influenced by many factors, such as species (the modified site was not originally found in human samples) and the change of protein sequence (the previous protein sequence is incomplete, and the protein sequence may be prolonged with the development of protein sequencing technology). When naming, we will use the "numbers" in historical reference to keep the sites consistent with the reports. The antibody binds to the following modification sequence (lowercase letters are modification sites):RYtVV

Target Information

Gene name LIMK2

Protein Name LIM domain kinase 2

Organism	Gene ID	UniProt ID
Human	3985 ;	P53671 ;
Mouse	16886 ;	O54785 ;
Rat	29524 ;	P53670 ;

Cellular Localization

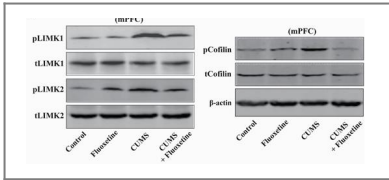
Cytoplasm, cytoskeleton, spindle . Cytoplasm, cytoskeleton, microtubule organizing center, centrosome .; [Isoform LIMK2a]: Cytoplasm . Nucleus .; [Isoform LIMK2b]: Cytoplasm . Cytoplasm, perinuclear region . Nucleus . Mainly present in the cytoplasm and is scarcely translocated to the nucleus. .

Tissue specificity Hepatoma,Lung,Ovary,

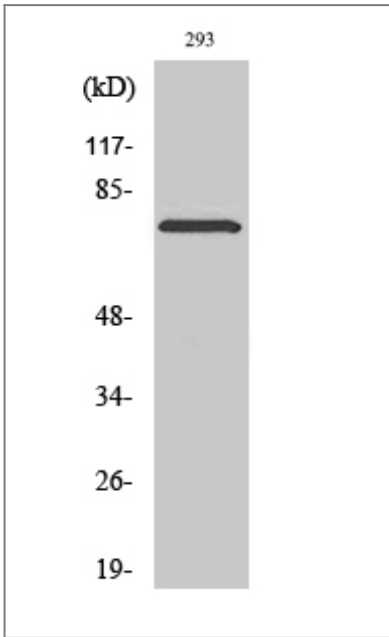
Function

Catalytic activity:ATP + a protein = ADP + a phosphoprotein.,Function:Displays serine/threonine-specific phosphorylation of myelin basic protein and histone (MBP) in vitro.,PTM:Phosphorylated on serine and/or threonine residues by ROCK1.,similarity:Belongs to the protein kinase superfamily. TKL Ser/Thr protein kinase family.,similarity:Contains 1 PDZ (DHR) domain.,similarity:Contains 1 protein kinase domain.,similarity:Contains 2 LIM zinc-binding domains.,subcellular location:Isoform LIMK2a is distributed in the cytoplasm and the nucleus.,subcellular location:Isoform LIMK2b occurs mainly in the cytoplasm and is scarcely translocated to the nucleus.,subunit:Binds ROCK1 and LKAP. Interacts with PARD3. Interacts with NISCH.,tissue specificity:Highest expression in the placenta; moderate level in liver, lung, kidney, and pancreas. LIMK2a is found to be more abundant than LIMK2b in liver, colon, stomach, and spleen, while in brain, kidney, and placenta LIMK2b is the dominant form. In adult lung, both LIMK2a and LIMK2b is nearly equally observed.,

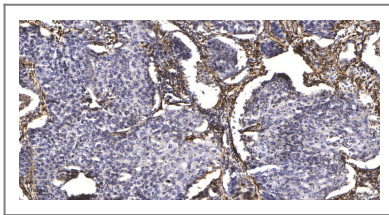
Validation Data



Gao, Ting-Ting, et al. "LIMK1/2 in the mPFC plays a role in chronic stress-induced depressive-like effects in mice." *International Journal of Neuropsychopharmacology* 23.12 (2020): 821-836.



Western Blot analysis of various cells using Phospho-LIMK-2 (T505) Polyclonal Antibody



Immunohistochemical analysis of paraffin-embedded human Squamous cell carcinoma of lung. 1, Antibody was diluted at 1:200 (4°C overnight). 2, Tris-EDTA, pH9.0 was used for antigen retrieval. 3, Secondary antibody was diluted at 1:200 (room temperature, 45min).

Contact information

Orders: order@immunoway.com
 Support: tech@immunoway.com
 Telephone: 877-594-3616 (Toll Free), 408-747-0185
 Website: <http://www.immunoway.com>
 Address: 2200 Ringwood Ave San Jose, CA 95131 USA



Please scan the QR code to access additional product information:
LIMK-2 (Phospho Thr505) Rabbit pAb

For Research Use Only. Not for Use in Diagnostic Procedures.

[Antibody](#) | [ELISA Kits](#) | [Protein](#) | [Reagents](#)