

Jun D (Phospho Ser255) Rabbit pAb

CatalogNo: YP0160

Orthogonal Validated Comparable Abs 

Key Features

Host Species

- Rabbit

Reactivity

- Human, Mouse, Rat

Applications

- WB, IHC, IF, IP, ELISA

MW

- 35kD (Calculated)

Isotype

- IgG

Storage

Storage* -15°C to -25°C/1 year (Do not lower than -25°C)

Formulation Liquid in PBS containing 50% glycerol, 0.5% BSA and 0.02% sodium azide.

Recommended Dilution Ratios

WB 1:500-1:2000

IHC 1:100-1:300

IP 2-5 ug/mg lysate

ELISA 1:20000

IF 1:50-200

Basic Information

Clonality Polyclonal

Immunogen Information

Immunogen The antiserum was produced against synthesized peptide derived from human JunD around the phosphorylation site of Ser255. AA range: 222-271

Specificity

Phospho-Jun D (S255) Polyclonal Antibody detects endogenous levels of Jun D protein only when phosphorylated at S255. The name of modified sites may be influenced by many factors, such as species (the modified site was not originally found in human samples) and the change of protein sequence (the previous protein sequence is incomplete, and the protein sequence may be prolonged with the development of protein sequencing technology). When naming, we will use the "numbers" in historical reference to keep the sites consistent with the reports. The antibody binds to the following modification sequence (lowercase letters are modification sites):GESPP

Target Information

Gene name JUND

Protein Name Transcription factor jun-D

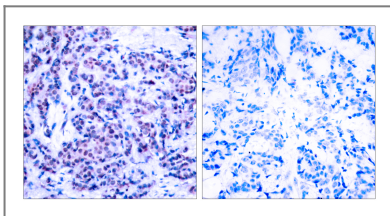
Organism	Gene ID	UniProt ID
Human	3727;	P17535;
Mouse	16478;	P15066;
Rat	24518;	P52909;

Cellular Localization Nucleus.

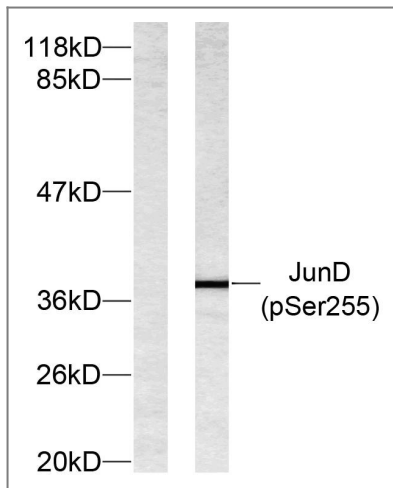
Tissue specificity Epithelium,Spleen,

Function Function: Binds an AP-1 site and upon cotransfection stimulates the activity of a promoter that bears an AP-1 site.,similarity: Belongs to the bZIP family. Jun subfamily.,similarity: Contains 1 bZIP domain.,subunit: Binds DNA as a dimer.,

Validation Data



Immunohistochemistry analysis of paraffin-embedded human breast carcinoma, using JunD (Phospho-Ser255) Antibody. The picture on the right is blocked with the phospho peptide.



Western blot analysis of lysates from 293 cells treated with Forskolin, using JunD (Phospho-Ser255) Antibody. The lane on the left is blocked with the phospho peptide.

Contact information

Orders: order@immunoway.com
Support: tech@immunoway.com
Telephone: 877-594-3616 (Toll Free), 408-747-0185
Website: <http://www.immunoway.com>
Address: 2200 Ringwood Ave San Jose, CA 95131 USA



Please scan the QR code to access additional product information:
Jun D (Phospho Ser255) Rabbit pAb

For Research Use Only. Not for Use in Diagnostic Procedures.

[Antibody](#) | [ELISA Kits](#) | [Protein](#) | [Reagents](#)