

# Jun B (Phospho Ser259) Rabbit pAb

CatalogNo: YP0158 Comparable Abs 

## Key Features

### Host Species

- Rabbit

### Reactivity

- Human, Mouse, Rat

### Applications

- WB, IHC, IF, IP, ELISA

### MW

- 33kD (Observed)

### Isotype

- IgG

## Storage

**Storage\*** -15°C to -25°C/1 year (Do not lower than -25°C)

**Formulation** Liquid in PBS containing 50% glycerol, 0.5% BSA and 0.02% sodium azide.

## Recommended Dilution Ratios

WB 1:500-1:2000

IHC 1:100-1:300

IP 2-5 ug/mg lysate

ELISA 1:20000

IF 1:50-200

## Basic Information

**Clonality** Polyclonal

## Immunogen Information

**Immunogen** The antiserum was produced against synthesized peptide derived from human JunB around the phosphorylation site of Ser259. AA range: 226-275

**Specificity**

Phospho-Jun B (S259) Polyclonal Antibody detects endogenous levels of Jun B protein only when phosphorylated at S259. The name of modified sites may be influenced by many factors, such as species (the modified site was not originally found in human samples) and the change of protein sequence (the previous protein sequence is incomplete, and the protein sequence may be prolonged with the development of protein sequencing technology). When naming, we will use the "numbers" in historical reference to keep the sites consistent with the reports. The antibody binds to the following modification sequence (lowercase letters are modification sites):PVsPI

---

## | Target Information

**Gene name** JUNB

**Protein Name** Transcription factor jun-B

Organism	Gene ID	UniProt ID
Human	<a href="#">3726;</a>	<a href="#">P17275;</a>
Mouse	<a href="#">16477;</a>	<a href="#">P09450;</a>
Rat	<a href="#">24517;</a>	<a href="#">P24898;</a>

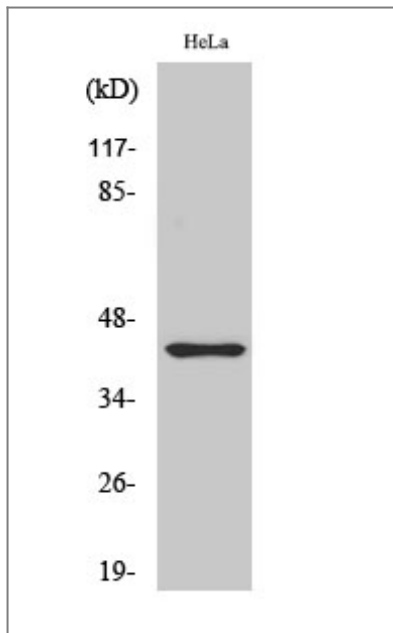
**Cellular Localization** Nucleus.

**Tissue specificity** Adipose tissue, Epithelium, Pancreas, Placenta, Prostat

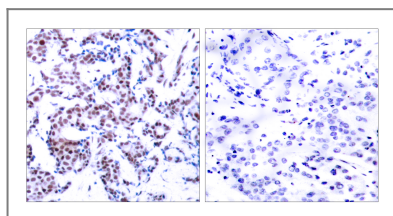
**Function** Function: Transcription factor involved in regulating gene activity following the primary growth factor response. Binds to the DNA sequence 5'-TGA[CG]TCA-3'. , induction: By growth factors. , similarity: Belongs to the bZIP family. , similarity: Belongs to the bZIP family. Jun subfamily. , similarity: Contains 1 bZIP domain. , subunit: Binds DNA as an homodimer or as a heterodimer with another member of the jun/fos family. ,

---

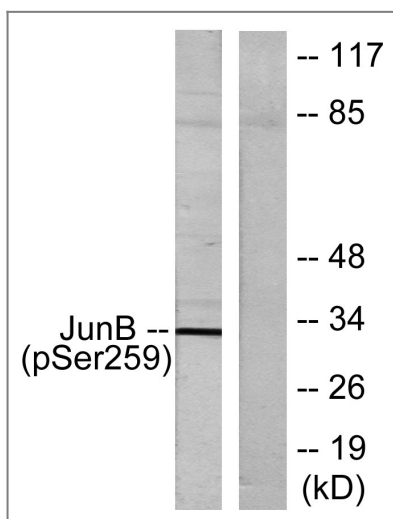
## | Validation Data



Western Blot analysis of various cells using Phospho-Jun B (S259) Polyclonal Antibody cells nucleus extracted by Minute TM Cytoplasmic and Nuclear Fractionation kit (SC-003, Inventbiotech, MN, USA).



Immunohistochemistry analysis of paraffin-embedded human breast carcinoma, using JunB (Phospho-Ser259) Antibody. The picture on the right is blocked with the phospho peptide.



Western blot analysis of lysates from HeLa cells, using JunB (Phospho-Ser259) Antibody. The lane on the right is blocked with the phospho peptide.

## Contact information

Orders: order@immunoway.com  
 Support: tech@immunoway.com  
 Telephone: 877-594-3616 (Toll Free), 408-747-0185  
 Website: <http://www.immunoway.com>  
 Address: 2200 Ringwood Ave San Jose, CA 95131 USA



Please scan the QR code to access additional product information:  
**Jun B (Phospho Ser259) Rabbit pAb**

