

Hrs (Phospho Tyr216) Rabbit pAb

CatalogNo: YP0132

| Key Features

Host Species

- Rabbit

Reactivity

- Human, Mouse, Rat

Applications

- WB, ELISA

MW

- 115kD (Observed)

Isotype

- IgG

| Recommended Dilution Ratios

WB 1:500-1:2000

ELISA 1:10000

Not yet tested in other applications.

| Storage

Storage*

-15°C to -25°C/1 year (Do not lower than -25°C)

Formulation

Liquid in PBS containing 50% glycerol, 0.5% BSA and 0.02% sodium azide.

| Basic Information

Clonality

Polyclonal

| Immunogen Information

Immunogen

Synthesized phospho-peptide around the phosphorylation site of human Hrs (phospho Tyr216)

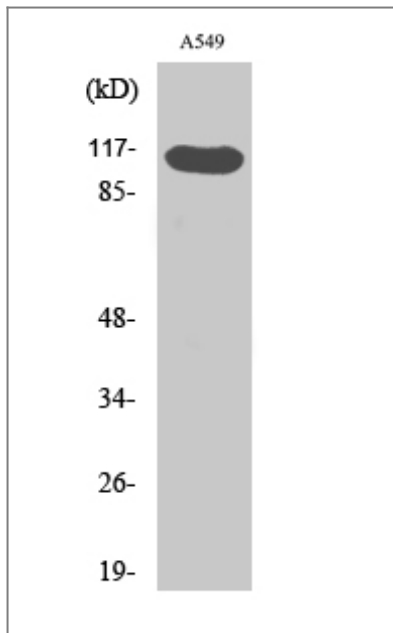
Specificity

Phospho-Hrs (Y216) Polyclonal Antibody detects endogenous levels of Hrs protein only when phosphorylated at Y216. The name of modified sites may be influenced by many factors, such as species (the modified site was not originally found in human samples) and the change of protein sequence (the previous protein sequence is incomplete, and the protein sequence may be prolonged with the development of protein sequencing technology). When naming, we will use the "numbers" in historical reference to keep the sites consistent with the reports. The antibody binds to the following modification sequence (lowercase letters are modification sites): PCyEQ

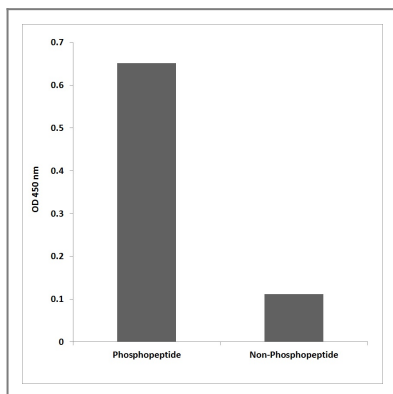
| Target Information

Gene name	HGS		
Protein Name	Hepatocyte growth factor-regulated tyrosine kinase substrate		
	Organism	Gene ID	UniProt ID
	Human	9146 ;	O14964 ;
	Mouse	15239 ;	Q99LI8 ;
	Rat	56084 ;	Q9JJ50 ;
Cellular Localization	Cytoplasm . Early endosome membrane ; Peripheral membrane protein ; Cytoplasmic side . Endosome, multivesicular body membrane ; Peripheral membrane protein . Colocalizes with UBQLN1 in ubiquitin-rich cytoplasmic aggregates that are not endocytic compartments. .		
Tissue specificity	Ubiquitous expression in adult and fetal tissues with higher expression in testis and peripheral blood leukocytes.		
Function	Domain:Has a double-sided UIM that can bind 2 ubiquitin molecules, one on each side of the helix.,Function:Involved in intracellular signal transduction mediated by cytokines and growth factors. When associated with STAM, it suppresses DNA signaling upon stimulation by IL-2 and GM-CSF. Could be a direct effector of PI3-kinase in vesicular pathway via early endosomes and may regulate trafficking to early and late endosomes by recruiting clathrin. May concentrate ubiquitinated receptors within clathrin-coated regions. Involved in down-regulation of receptor tyrosine kinase via multivesicular body (MVBs) when complexed with STAM (ESCRT-0 complex). The ESCRT-0 complex binds ubiquitin and acts as sorting machinery that recognizes ubiquitinated receptors and transfers them to further sequential lysosomal sorting/trafficking processes. May contribute to the efficient recruitment of SMADs to the activin receptor complex.,PTM:Phosphorylated on Tyr-334. A minor site of phosphorylation on Tyr-329 is detected (By similarity). Phosphorylation occurs in response to EGF, IL-2, GM-CSF and HGF.,similarity:Contains 1 FYVE-type zinc finger.,similarity:Contains 1 UIM (ubiquitin-interacting motif) repeat.,similarity:Contains 1 VHS domain.,subunit:Component of the ESCRT-0 complex composed of STAM or STAM2 and HGS. Part of a complex at least composed of HSG, STAM2 (or probably STAM) and EPS15. Interacts with STAM. Interacts with STAM2. Interacts with EPS15; the interaction is direct, calcium-dependent and inhibited by SNAP25. Interacts with NF2; the interaction is direct. Interacts with ubiquitin; the interaction is direct. Interacts with VPS37C. Interacts with SMAD1, SMAD2 and SMAD3. Interacts with TSG101; the interaction mediates the association with the ESCRT-I complex. Interacts with SNAP25; the interaction is direct and decreases with addition of increasing concentrations of free calcium. Interacts with SNX1; the interaction is direct. Component of a 550 kDa membrane complex at least composed of HGS and SNX1 but excluding EGFR.,tissue specificity:Ubiquitous expression in adult and fetal tissues with higher expression in testis and peripheral blood leukocytes.,		

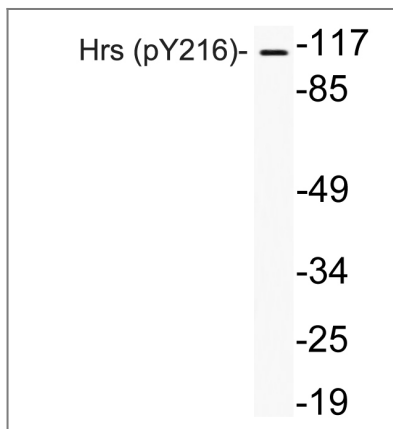
| Validation Data



Western Blot analysis of various cells using Phospho-Hrs (Y216) Polyclonal Antibody



Enzyme-Linked Immunosorbent Assay (Phospho-ELISA) for Immunogen Phosphopeptide (Phospho-left) and Non-Phosphopeptide (Phospho-right), using Hrs (Phospho-Tyr216) Antibody



Western blot analysis of lysates from A549 cells, using phospho-Hrs (Phospho-Tyr216) antibody.

Contact information

Orders: order@immunoway.com
 Support: tech@immunoway.com
 Telephone: 877-594-3616 (Toll Free), 408-747-0185
 Website: <http://www.immunoway.com>
 Address: 2200 Ringwood Ave San Jose, CA 95131 USA



Please scan the QR code to access additional product information:

Hrs (Phospho Tyr216) Rabbit pAb

