

GSK3 α (Phospho Ser21) Rabbit pAb

CatalogNo: YP0122

Comparable Abs 

Key Features

Host Species

- Rabbit

Reactivity

- Human, Mouse, Rat

Applications

- WB, IHC, IF, IP, ELISA

MW

- 55kD (Observed)

Isotype

- IgG

Recommended Dilution Ratios

WB 1:500-1:2000**IHC 1:100-1:300****IP 2-5 ug/mg lysate****ELISA 1:20000****IF 1:50-200**

Storage

Storage*

-15°C to -25°C/1 year(Do not lower than -25°C)

Formulation

Liquid in PBS containing 50% glycerol, 0.5% BSA and 0.02% sodium azide.

Basic Information

Clonality

Polyclonal

Immunogen Information

Immunogen

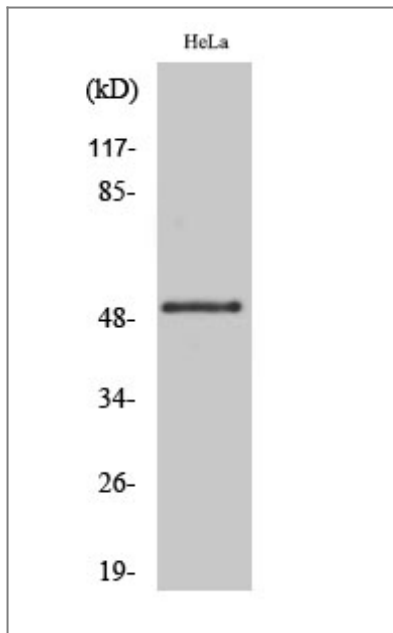
The antiserum was produced against synthesized peptide derived from human GSK3 alpha around the phosphorylation site of Ser21. AA range:10-59

Specificity Phospho-GSK3α (S21) Polyclonal Antibody detects endogenous levels of GSK3α protein only when phosphorylated at S21. The name of modified sites may be influenced by many factors, such as species (the modified site was not originally found in human samples) and the change of protein sequence (the previous protein sequence is incomplete, and the protein sequence may be prolonged with the development of protein sequencing technology). When naming, we will use the "numbers" in historical reference to keep the sites consistent with the reports. The antibody binds to the following modification sequence (lowercase letters are modification sites):TSsFA

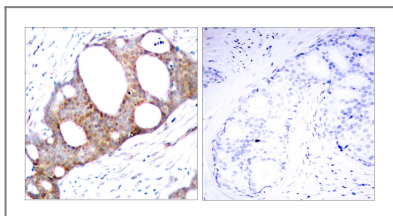
Target Information

Gene name	GSK3A		
Protein Name	Glycogen synthase kinase-3 alpha		
	Organism	Gene ID	UniProt ID
	Human	2931 ;	P49840 ;
	Mouse	606496 ;	Q2NL51 ;
	Rat	50686 ;	P18265 ;
Cellular Localization	apical dendrite;axon;beta-catenin destruction complex;cytoplasm;cytosol;mitochondrion;neuronal cell body;nucleus;postsynapse;proximal dendrite;		
Tissue specificity	Brain, Eye, Foreskin, Lung, Pancreas, Platelet, Testis,		
Function	Catalytic activity:ATP + [tau protein] = ADP + [tau protein] phosphate.,Function:Implicated in the hormonal control of several regulatory proteins including glycogen synthase, MYB and the transcription factor JUN.,similarity:Belongs to the protein kinase superfamily.,similarity:Belongs to the protein kinase superfamily. CMGC Ser/Thr protein kinase family. GSK-3 subfamily.,similarity:Contains 1 protein kinase domain.,subunit:Monomer.,		

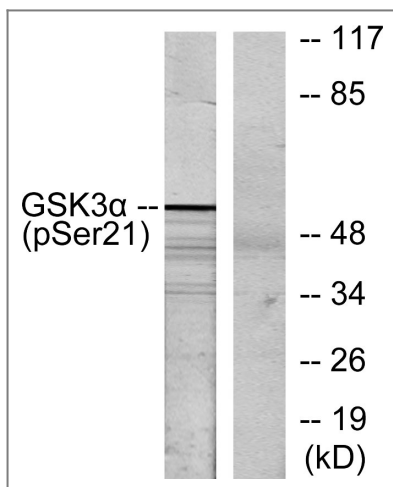
Validation Data



Western Blot analysis of various cells using Phospho-GSK3 α (S21) Polyclonal Antibody



Immunohistochemistry analysis of paraffin-embedded human breast carcinoma, using GSK3 alpha (Phospho-Ser21) Antibody. The picture on the right is blocked with the phospho peptide.



Western blot analysis of lysates from ovary cancer, using GSK3 alpha (Phospho-Ser21) Antibody. The lane on the right is blocked with the phospho peptide.

Contact information

Orders: order@immunoway.com
 Support: tech@immunoway.com
 Telephone: 877-594-3616 (Toll Free), 408-747-0185
 Website: <http://www.immunoway.com>
 Address: 2200 Ringwood Ave San Jose, CA 95131 USA



Please scan the QR code to access additional product information:
GSK3 α (Phospho Ser21) Rabbit pAb

