

Erbin (Phospho Tyr1104) Rabbit pAb

CatalogNo: YP0099

Key Features

Host Species

- Rabbit

Reactivity

- Human, Mouse, Rat

Applications

- WB, ELISA

MW

- 172kD (Observed)

Isotype

- IgG

Storage

Storage* -15°C to -25°C/1 year (Do not lower than -25°C)

Formulation Liquid in PBS containing 50% glycerol, 0.5% BSA and 0.02% sodium azide.

Recommended Dilution Ratios

WB 1:500-1:2000

ELISA 1:10000

Not yet tested in other applications.

Basic Information

Clonality Polyclonal

Immunogen Information

Immunogen Synthesized phospho-peptide around the phosphorylation site of human Erbin (phospho Tyr1104)

Specificity Phospho-Erbin (Y1104) Polyclonal Antibody detects endogenous levels of Erbin protein only when phosphorylated at Y1104. The name of modified sites may be influenced by many factors, such as species (the modified site was not originally found in human samples) and the change of protein sequence (the previous protein sequence is incomplete, and the protein sequence may be prolonged with the development of protein sequencing technology). When naming, we will use the "numbers" in historical reference to keep the sites consistent with the reports. The antibody binds to the following modification sequence (lowercase letters are modification sites): GDyLS

| Target Information

Gene name ERBB2IP ERBIN KIAA1225 LAP2

Protein Name Erbin Polyclonal Antibody

Organism	Gene ID	UniProt ID
Human	55914;	Q96RT1;
Mouse	59079;	Q80TH2;
Rat	25359;	Q62733;

Cellular Localization

Cell junction, hemidesmosome . Nucleus membrane . Basolateral cell membrane . Found in hemidesmosomes, which are cell-substrate adhesion complexes in stratified epithelia. In transfected cells, either diffusely distributed over the cytoplasm or concentrated at the basolateral membrane. Colocalizes with the adrenergic receptors, ADREN1A and ADREN1B, at the nuclear membrane of cardiac myocytes (By similarity). .

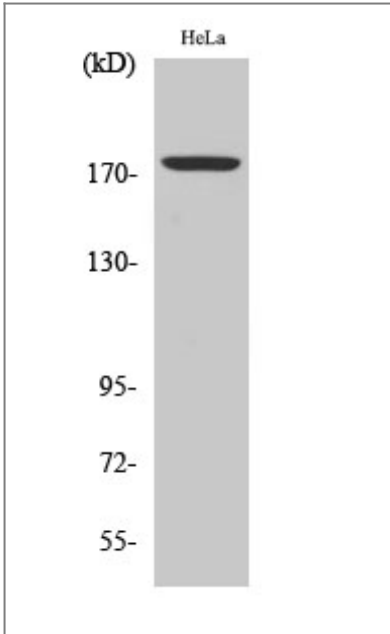
Tissue specificity

Highly expressed in brain, heart, kidney, muscle and stomach, followed by liver, spleen and intestine.

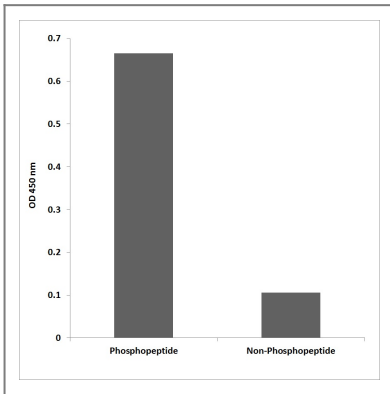
Function

Function:Acts as an adapter for the receptor ERBB2, in epithelia. By binding the unphosphorylated 'Tyr-1248' of receptor ERBB2, it may contribute to stabilize this unphosphorylated state.,sequence Caution:Contaminating sequence. Potential poly-A sequence.,similarity:Belongs to the LAP (LRR and PDZ) protein family.,similarity:Contains 1 PDZ (DHR) domain.,similarity:Contains 17 LRR (leucine-rich) repeats.,subcellular location:Found in hemidesmosomes, which are cell-substrate adhesion complexes in stratified epithelia. In transfected cells, either diffusely distributed over the cytoplasm or concentrated at the basolateral membrane.,subunit:Interacts with ERBB2, BPAG1 and ITGB4. May favor the localization of ERBB2, by restricting its presence to the basolateral membrane of epithelial cells. Also found to interact with ARVCF and delta catenin.,tissue specificity:Highly expressed in brain, heart, kidney, muscle and stomach, followed by liver, spleen and intestine.,

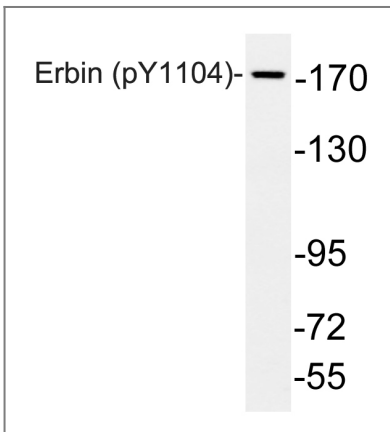
| Validation Data



Western Blot analysis of various cells using Phospho-Erbin (Y1104) Polyclonal Antibody



Enzyme-Linked Immunosorbent Assay (Phospho-ELISA) for Immunogen Phosphopeptide (Phospho-left) and Non-Phosphopeptide (Phospho-right), using Erbin (Phospho-Tyr1104) Antibody



Western blot analysis of lysates from HeLa cells, using phospho-Erbin (Phospho-Tyr1104) antibody.

Contact information

Orders: order@immunoway.com
 Support: tech@immunoway.com
 Telephone: 877-594-3616 (Toll Free), 408-747-0185
 Website: <http://www.immunoway.com>
 Address: 2200 Ringwood Ave San Jose, CA 95131 USA



Please scan the QR code to access additional product information:
Erbin (Phospho Tyr1104) Rabbit pAb

