

## ATF-4 (Phospho Ser245) Rabbit pAb

CatalogNo: YP0076

### Key Features

#### Host Species

- Rabbit

#### Reactivity

- Human, Mouse, Rat

#### Applications

- IHC, IF (paraffin section), ELISA

#### Isotype

- IgG

### Storage

**Storage\*** -20°C/1 year, Ship by ice bag

**Formulation** Liquid in PBS containing 50% glycerol, 0.5% BSA and 0.02% sodium azide.

### Recommended Dilution Ratios

**IHC 1:100 -300**

**ELISA 1:10000**

**Not yet tested in other applications.**

### Basic Information

**Clonality** Polyclonal

### Immunogen Information

**Immunogen** The antiserum was produced against synthesized peptide derived from human ATF4 around the phosphorylation site of Ser245. AA range:212-261

**Specificity** Phospho-CREB-2 (S245) Polyclonal Antibody detects endogenous levels of CREB-2 protein only when phosphorylated at S245. The name of modified sites may be influenced by many factors, such as species (the modified site was not originally found in human samples) and the change of protein sequence (the previous protein sequence is incomplete, and the protein sequence may be prolonged with the development of protein sequencing technology). When naming, we will use the "numbers" in historical reference to keep the sites consistent with the reports. The antibody binds to the following modification sequence (lowercase letters are modification sites):NRSLP

## Target Information

**Gene name** ATF4

**Protein Name** Cyclic AMP-dependent transcription factor ATF-4

Organism	Gene ID	UniProt ID
Human	<a href="#">468;</a>	<a href="#">P18848;</a>
Mouse		<a href="#">Q06507;</a>

**Cellular Localization**

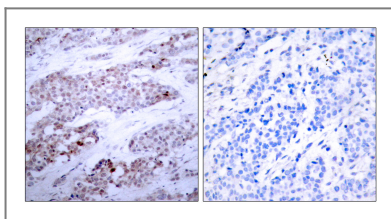
Nucleus . Nucleus speckle . Cytoplasm . Cell membrane . Cytoplasm, cytoskeleton, microtubule organizing center, centrosome . Colocalizes with GABBR1 in hippocampal neuron dendritic membranes (By similarity). Colocalizes with NEK6 at the centrosome (PubMed:20873783). Recruited to nuclear speckles following interaction with EP300/p300 (PubMed:16219772). .

**Tissue specificity** Bladder,Colon,Fibroblast,Leukemic T-cell,Lung,Ovary,Placenta,

**Function**

Function:Transcriptional activator. Binds the cAMP response element (CRE) (consensus: 5'-GTGACGT[AC][AG]-3'), a sequence present in many viral and cellular promoters. It binds to a Tax-responsive enhancer element in the long terminal repeat of HTLV-I.,similarity:Belongs to the bZIP family.,similarity:Contains 1 bZIP domain.,subcellular location:Colocalizes with GABBR1 in hippocampal neuron dendritic membranes.,subunit:Interacts with the C-terminal region of GABBR1 via the leucine zipper of its C-terminal bZIP domain. Interacts with the C-terminal region of GABBR2 (By similarity). Binds DNA as a homo-or heterodimer. Interacts with the N-terminal region of CEP290.,

## Validation Data



Immunohistochemistry analysis of paraffin-embedded human breast carcinoma, using ATF4 (Phospho-Ser245) Antibody. The picture on the right is blocked with the phospho peptide.

## Contact information

Orders: [order@immunoway.com](mailto:order@immunoway.com)  
Support: [tech@immunoway.com](mailto:tech@immunoway.com)  
Telephone: 877-594-3616 (Toll Free), 408-747-0185  
Website: <http://www.immunoway.com>  
Address: 2200 Ringwood Ave San Jose, CA 95131 USA



Please scan the QR code to access additional product information:  
**ATF-4 (Phospho Ser245) Rabbit pAb**

