

## CALHM1 Rabbit pAb

CatalogNo: YN5650

### Key Features

#### Host Species

- Rabbit

#### Reactivity

- Human,Rat

#### Applications

- WB,IHC,IF

#### MW

- 40kD (Observed)

#### Isotype

- IgG

### Recommended Dilution Ratios

**WB 1:500-1000**

**IHC 1:200-500**

**IF 1:50-200**

### Storage

**Storage\*** -15°C to -25°C/1 year(Do not lower than -25°C)

**Formulation** PBS, pH 7.4, containing 0.5%BSA, 0.02% sodium azide as Preservative and 50% Glycerol.

### Basic Information

**Clonality** Polyclonal

### Immunogen Information

**Immunogen** Synthetic Peptide of CALHM1 AA range: 204-254

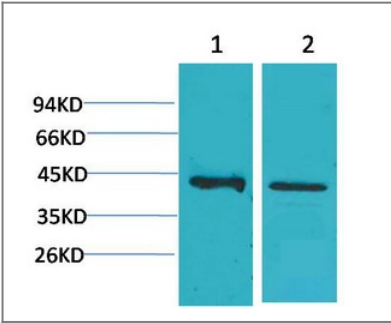
**Specificity** The antibody detects endogenous CALHM1 protein.

### Target Information

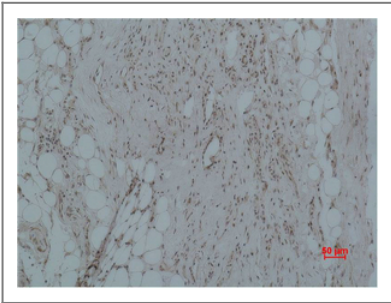
**Gene name** CALHM1

<b>Protein Name</b>	Calcium homeostasis modulator protein 1		
	<b>Organism</b>	<b>Gene ID</b>	<b>UniProt ID</b>
	Human	<a href="#">255022</a> ;	<a href="#">Q8IU99</a> ;
<b>Cellular Localization</b>	Cell membrane; Multi-pass membrane protein . Endoplasmic reticulum membrane ; Multi-pass membrane protein. Basolateral cell membrane; Multi-pass membrane protein . Colocalizes with HSPA5 at the endoplasmic reticulum (PubMed:18585350). Localizes to the basolateral membrane of epithelial cells including taste cells (By similarity). .		
<b>Tissue specificity</b>	Predominantly expressed in adult brain. Detected also in retinoic acid-differentiated SH-SY5Y cells. Specifically expressed in circumvallate taste bud cells.		
<b>Function</b>	Function:May be a pore-forming ion channel. Controls cytosolic Ca(2+) permeability and cytosolic Ca(2+) concentration. Controls amyloid precursor protein (APP) proteolysis and aggregated amyloid-beta (Abeta) peptides levels in a Ca(2+) dependent manner.,polymorphism:Leu-86 causes a dysregulation of Ca(2+) homeostasis and amyloid precursor protein (APP) metabolism, and may be a risk factor for the development of Alzheimer's disease.,similarity:Belongs to the FAM26 family.,subcellular location:Colocalizes with HSPA5 at the endoplasmic reticulum.,subunit:Homooligomer; homomultimerized to form dimeric and possibly tetrameric structures.,tissue specificity:Predominantly expressed in adult brain. Detected also in retinoic acid-differentiated SH-SY5Y cells.,		

Validation Data



Western blot analysis of 1) Human Brain Tissue, 2) Rat Brain Tissue using CALHM1 Polyclonal Antibody. Secondary antibody(catalog#:RS0002) was diluted at 1:20000



Immunohistochemical analysis of paraffin-embedded Human Hepatocarcinoma using CALHM1 Polyclonal Antibody.

Contact information

Orders: [order@immunoway.com](mailto:order@immunoway.com)  
Support: [tech@immunoway.com](mailto:tech@immunoway.com)  
Telephone: 877-594-3616 (Toll Free), 408-747-0185  
Website: <http://www.immunoway.com>  
Address: 2200 Ringwood Ave San Jose, CA 95131 USA



Please scan the QR code  
to access additional  
product information:  
**CALHM1 Rabbit pAb**

---

For Research Use Only. Not for Use in Diagnostic Procedures.

[Antibody](#) | [ELISA Kits](#) | [Protein](#) | [Reagents](#)