

## EYFP Rabbit pAb

CatalogNo: YN5601

### | Key Features

#### Host Species

- Rabbit

#### Reactivity

- Species independent

#### Applications

- WB

#### Isotype

- IgG

### | Recommended Dilution Ratios

WB 1:3000-5000

### | Storage

**Storage\*** -15°C to -25°C/1 year(Do not lower than -25°C)

**Formulation** PBS, pH 7.4, containing 0.5%BSA, 0.02% sodium azide as Preservative and 50% Glycerol.

### | Basic Information

**Clonality** Polyclonal

### | Immunogen Information

**Immunogen** Recombinant Protein of EYFP

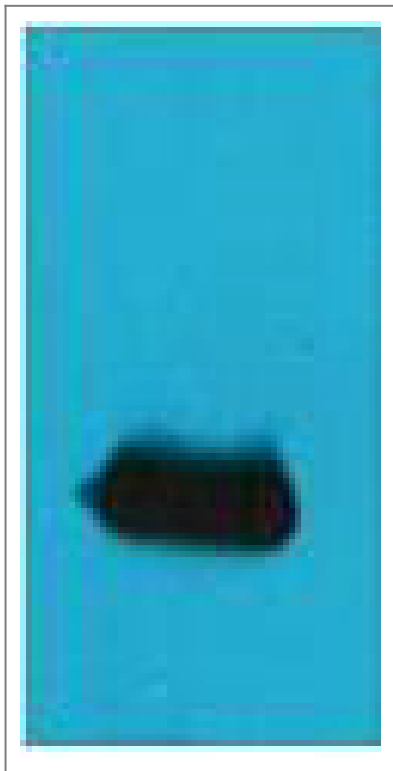
**Specificity** The antibody detects EYFP YFP CFP morange tag fusion proteins. It is also reactive against GFP tag weakly

### | Target Information

**Protein Name**

---

## | Validation Data



Western blot analysis of EYFP recombinant protein, diluted at 1:5000.  
Secondary antibody(catalog#:RS0002) was diluted at 1:20000

## | Contact information

Orders: [order@immunoway.com](mailto:order@immunoway.com)  
Support: [tech@immunoway.com](mailto:tech@immunoway.com)  
Telephone: 877-594-3616 (Toll Free), 408-747-0185  
Website: <http://www.immunoway.com>  
Address: 2200 Ringwood Ave San Jose, CA 95131 USA



Please scan the QR code  
to access additional  
product information:  
**EYFP Rabbit pAb**

---

For Research Use Only. Not for Use in Diagnostic Procedures.

[Antibody](#) | [ELISA Kits](#) | [Protein](#) | [Reagents](#)