

GAPDH Rabbit pAb

CatalogNo: YN5583

| Key Features

Host Species

- Rabbit

Reactivity

- Zebrafish

Applications

- WB

MW

- 37kD (Observed)

Isotype

- IgG

| Recommended Dilution Ratios

WB 1:2000-5000

| Storage

Storage* -15°C to -25°C/1 year(Do not lower than -25°C)

Formulation PBS, pH 7.4, containing 0.5%BSA, 0.02% sodium azide as Preservative and 50% Glycerol.

| Basic Information

Clonality Polyclonal

| Immunogen Information

Immunogen Recombinant Protein of Glyceraldehyde-3-phosphate dehydrogenase

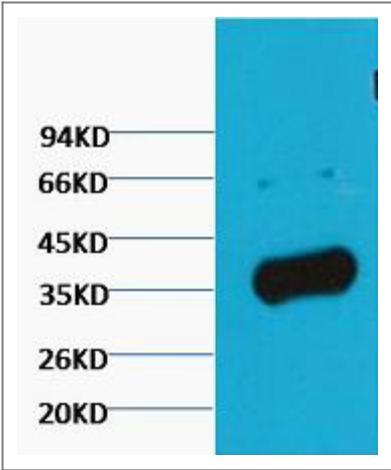
Specificity The antibody detects Zebrafish endogenous GAPDH protein.

| Target Information

Gene name GAPDH

| | | | |
|------------------------------|---|------------------------|--------------------------|
| Protein Name | Glyceraldehyde-3-phosphate dehydrogenase | | |
| | Organism | Gene ID | UniProt ID |
| | Human | 2597 ; | P04406 ; |
| Cellular Localization | Cytoplasm, cytosol . Nucleus . Cytoplasm, perinuclear region . Membrane . Cytoplasm, cytoskeleton . Translocates to the nucleus following S-nitrosylation and interaction with SIAH1, which contains a nuclear localization signal (By similarity). Postnuclear and Perinuclear regions (PubMed:12829261). . | | |
| Tissue specificity | Astrocytoma,Brain,Cajal-Retzius cell,Colon adenocarcinoma,Epitheliu | | |
| Function | Catalytic activity:D-glyceraldehyde 3-phosphate + phosphate + NAD(+) = 3-phospho-D-glyceroyl phosphate + NADH.,Function:Independent of its glycolytic activity it is also involved in membrane trafficking in the early secretory pathway.,online information:Glyceraldehyde 3-phosphate dehydrogenase entry,pathway:Carbohydrate degradation; glycolysis; pyruvate from D-glyceraldehyde 3-phosphate: step 1.,pathway:Carbohydrate degradation; glycolysis; pyruvate from D-glyceraldehyde 3-phosphate: step 1/5.,PTM:Reversible S-nitrosylation of Cys-152 inhibits enzymatic activity and increases endogenous ADP-ribosylation, which inhibits the enzyme in a non-reversible manner. The latter modification is more likely to be a pathophysiological event associated with inhibition of gluconeogenesis.,sequence Caution:Differs quite extensively.,similarity:Belongs to the glyceraldehyde-3-phosphate dehydrogenase family.,subcellular location:Postnuclear and Perinuclear regions.,subunit:Homotetramer.,subunit:Homotetramer. Binds PRKCI., | | |

| Validation Data



Western blot analysis of Zebrafish skeletal muscle, diluted at 1:5000. Secondary antibody(catalog#:RS0002) was diluted at 1:20000

| Contact information

Orders: order@immunoway.com
Support: tech@immunoway.com
Telephone: 877-594-3616 (Toll Free), 408-747-0185
Website: <http://www.immunoway.com>
Address: 2200 Ringwood Ave San Jose, CA 95131 USA



Please scan the QR code
to access additional
product information:
GAPDH Rabbit pAb

For Research Use Only. Not for Use in Diagnostic Procedures.

[Antibody](#) | [ELISA Kits](#) | [Protein](#) | [Reagents](#)