

## GFP-Tag Rabbit pAb

CatalogNo: YN5582 **Protein Overexpression** 

### Key Features

**Host Species**

- Rabbit

**Reactivity**

- Species independent

**Applications**

- WB,IF

**Isotype**

- IgG

### Storage

**Storage\*** -15°C to -25°C/1 year(Do not lower than -25°C)**Formulation** PBS, pH 7.4, containing 0.5%BSA, 0.02% sodium azide as Preservative and 50% Glycerol.

### Recommended Dilution Ratios

**WB 1:5000****IF 1:50-200**

### Basic Information

**Clonality** Polyclonal

### Immunogen Information

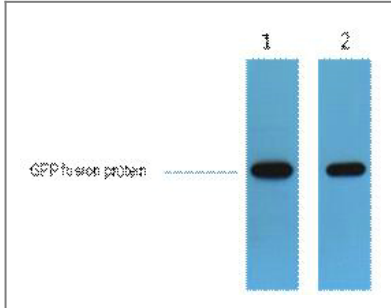
**Immunogen** Recombinant Protein of GFP-Tag**Specificity** GFP antibody is reactive against all variants of Aequorea victoria GFP such as S65T-GFP, RS-GFP, YFP, CFP, RFP and EGFP.

### Target Information

**Protein Name** GFP Tag

---

## Validation Data



1ug GFP fusion protein+ Primary antibody dilution at 1) 1:5000 2) 1:20000.  
Secondary antibody(catalog#:RS0002) was diluted at 1:20000

## Contact information

Orders: [order@immunoway.com](mailto:order@immunoway.com)  
Support: [tech@immunoway.com](mailto:tech@immunoway.com)  
Telephone: 877-594-3616 (Toll Free), 408-747-0185  
Website: <http://www.immunoway.com>  
Address: 2200 Ringwood Ave San Jose, CA 95131 USA



Please scan the QR code  
to access additional  
product information:  
**GFP-Tag Rabbit pAb**

---

For Research Use Only. Not for Use in Diagnostic Procedures.

[Antibody](#) | [ELISA Kits](#) | [Protein](#) | [Reagents](#)