

GST-Tag Rabbit pAb

CatalogNo: YN5574 **Protein Overexpression** 

Key Features

Host Species

- Rabbit

Reactivity

- Species independent

Applications

- WB, ELISA

Isotype

- IgG

Recommended Dilution Ratios

WB 1:5000-10000**ELISA 1:5000-20000**

Storage

Storage* -15°C to -25°C/1 year(Do not lower than -25°C)**Formulation** PBS, pH 7.4, containing 0.5%BSA, 0.02% sodium azide as Preservative and 50% Glycerol.

Basic Information

Clonality Polyclonal

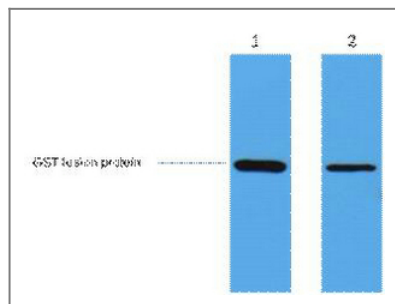
Immunogen Information

Immunogen Recombinant Protein of GST-Tag**Specificity** The antibody detects C-terminal, internal, and N-terminal GST fusion proteins.

Target Information

Protein Name

Validation Data



0.5ug GST fusion protein+ Primary antibody dilution at 1) 1:5000 2) 1:20000.
Secondary antibody(catalog#:RS0002) was diluted at 1:20000

Contact information

Orders: order@immunoway.com
Support: tech@immunoway.com
Telephone: 877-594-3616 (Toll Free), 408-747-0185
Website: <http://www.immunoway.com>
Address: 2200 Ringwood Ave San Jose, CA 95131 USA



Please scan the QR code
to access additional
product information:
GST-Tag Rabbit pAb

For Research Use Only. Not for Use in Diagnostic Procedures.

[Antibody](#) | [ELISA Kits](#) | [Protein](#) | [Reagents](#)