

## KCNN2 (SK2) Rabbit pAb

CatalogNo: YN5540

### Key Features

#### Host Species

- Rabbit

#### Reactivity

- Human,Rat,Mouse

#### Applications

- WB,IHC,IF

#### MW

- 70,26kD (Observed)

#### Isotype

- IgG

### Recommended Dilution Ratios

WB 1:1000-2000

IHC 1:100-200

IF 1:50-200

### Storage

**Storage\*** -15°C to -25°C/1 year(Do not lower than -25°C)

**Formulation** Liquid in PBS containing 50% glycerol, 0.5% BSA and 0.02% sodium azide.

### Basic Information

**Clonality** Polyclonal

### Immunogen Information

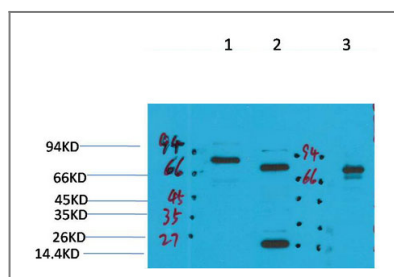
**Immunogen** Synthetic Peptide of KCNN2 (SK2)

**Specificity** KCNN2(SK2) protein(A244) detects endogenous levels of KCNN2(SK2)

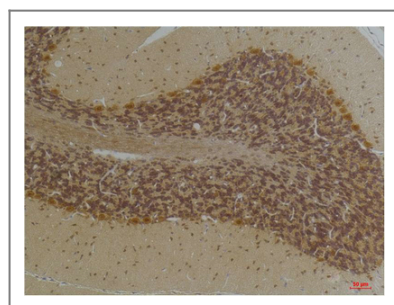
### Target Information

Protein Name	Organism	Gene ID	UniProt ID
	Human	<a href="#">3781</a> ;	<a href="#">Q6PJI0</a> ;
<b>Cellular Localization</b>	smooth endoplasmic reticulum,plasma membrane,cell surface,integral component of membrane,Z disc,T-tubule,neuronal cell body,dendritic spine,		
<b>Tissue specificity</b>	Brain,Heart,Hippocampus,Myometrium,Skin,		
<b>Function</b>	Function:Forms a voltage-independent potassium channel activated by intracellular calcium. Activation is followed by membrane hyperpolarization. Thought to regulate neuronal excitability by contributing to the slow component of synaptic afterhyperpolarization. The channel is blocked by apamin.,similarity:Belongs to the potassium channel KCNN family.,subunit:Heterooligomer. The complex is composed of 4 channel subunits each of which binds to a calmodulin subunit which regulates the channel activity through calcium-binding.,tissue specificity:Widely expressed.,		

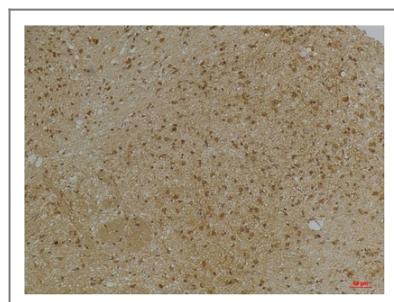
## Validation Data



Western blot analysis of 1) Rat BrainTissue, 2)Mouse Brain Tissue, 3) HepG2 with KCNN2(SK2) Rabbit pAb diluted at 1:2,000.



Immunohistochemical analysis of paraffin-embedded Human BrainTissue using KCNN2(SK2) Rabbit pAb diluted at 1:200.



Immunohistochemical analysis of paraffin-embedded Mouse BrainTissue using KCNN2(SK2) Rabbit pAb diluted at 1:200.

## Contact information

Orders: [order@immunoway.com](mailto:order@immunoway.com)  
Support: [tech@immunoway.com](mailto:tech@immunoway.com)  
Telephone: 877-594-3616 (Toll Free), 408-747-0185  
Website: <http://www.immunoway.com>  
Address: 2200 Ringwood Ave San Jose, CA 95131 USA



Please scan the QR code  
to access additional  
product information:  
**KCNN2 (SK2) Rabbit  
pAb**

---

For Research Use Only. Not for Use in Diagnostic Procedures.

[Antibody](#) | [ELISA Kits](#) | [Protein](#) | [Reagents](#)