

L-type Ca⁺⁺ CP γ 5 Rabbit pAb

CatalogNo: YN5520

Key Features

Host Species

- Rabbit

Reactivity

- Human, Mouse, Rat

Applications

- WB, IHC, IF

MW

- 35kD (Observed)

Isotype

- IgG

Storage

Storage* -15°C to -25°C/1 year (Do not lower than -25°C)**Formulation** PBS, pH 7.4, containing 0.5% BSA, 0.02% sodium azide as Preservative and 50% Glycerol.

Recommended Dilution Ratios

WB 1:500-1000**IHC 1:100-200****IF 1:50-200**

Basic Information

Clonality Polyclonal

Immunogen Information

Immunogen Synthetic Peptide of L-type Ca⁺⁺ CP γ 5 AA range: 110-190**Specificity** The antibody detects endogenous L-type Ca⁺⁺ CP γ 5 protein.

Target Information

Gene name CACNG5

Protein Name Voltage-dependent calcium channel gamma-5 subunit

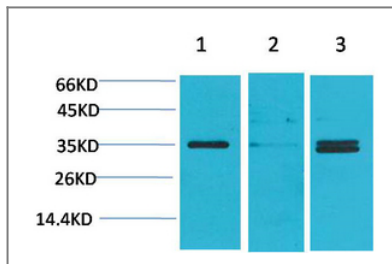
Organism	Gene ID	UniProt ID
Human	10369;	Q9UF02;
Mouse		Q8VHW4;
Rat		Q8VHW8;

Cellular Localization Membrane ; Multi-pass membrane protein . Cell junction, synapse, postsynaptic density membrane .

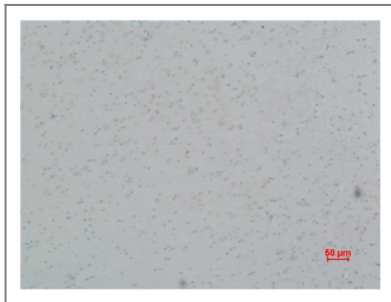
Tissue specificity Brain cortex,Thalamus,

Function Function:Thought to stabilize the calcium channel in an inactivated (closed) state.,similarity:Belongs to the PMP-22/EMP/MP20 family. CACNG subfamily.,subunit:The L-type calcium channel is composed of five subunits: alpha-1, alpha-2/delta, beta and gamma.,

Validation Data



Western blot analysis of 1) Human Brain Tissue, 2) Mouse Brain Tissue, 3) Rat Brain Tissue using L-type Ca⁺⁺ CP γ 5 Polyclonal Antibody. Secondary antibody(catalog#:RS0002) was diluted at 1:20000



Immunohistochemical analysis of paraffin-embedded Rat Brain Tissue using L-type Ca⁺⁺ CP γ 5 Polyclonal Antibody.

Contact information

Orders: order@immunoway.com
Support: tech@immunoway.com
Telephone: 877-594-3616 (Toll Free), 408-747-0185
Website: <http://www.immunoway.com>
Address: 2200 Ringwood Ave San Jose, CA 95131 USA



Please scan the QR code to access additional product information:
L-type Ca⁺⁺ CP γ 5 Rabbit pAb

