

TRIM72 Rabbit pAb

CatalogNo: YN5445

Key Features

Host Species

- Rabbit

Reactivity

- Human, Mouse, Rat

Applications

- WB, IHC, IF

MW

- 53kD (Observed)

Isotype

- IgG

Recommended Dilution Ratios

WB 1:1000**IHC 1:200-500****IF 1:50-200**

Storage

Storage* -15°C to -25°C/1 year (Do not lower than -25°C)**Formulation** PBS, pH 7.4, containing 0.5% BSA, 0.02% sodium azide as Preservative and 50% Glycerol.

Basic Information

Clonality Polyclonal

Immunogen Information

Immunogen Recombinant Protein of TRIM72**Specificity** The antibody detects endogenous TRIM72 protein.

Target Information

Gene name TRIM72

Protein Name Tripartite motif-containing protein 72

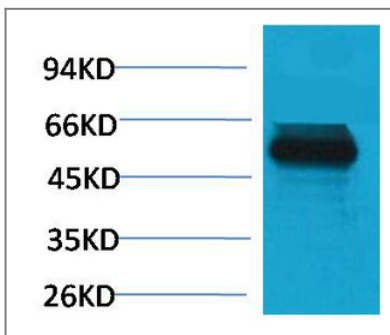
Organism	Gene ID	UniProt ID
Human	493829;	Q6ZMU5;
Mouse		Q1XH17;
Rat		A0JPQ4;

Cellular Localization Cell membrane, sarcolemma . Cytoplasmic vesicle membrane . Tethered to plasma membrane and cytoplasmic vesicles via its interaction with phosphatidylserine. .

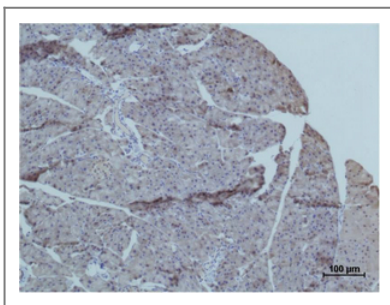
Tissue specificity Cerebellum,Muscle,Thymus,

Function similarity:Belongs to the TRIM/RBCC family.,similarity:Contains 1 B box-type zinc finger.,similarity:Contains 1 B30.2/SPRY domain.,similarity:Contains 1 RING-type zinc finger.,

Validation Data



Western blot analysis of Mouse skeletal muscle using TRIM72 Polyclonal Antibody. Secondary antibody(catalog#:RS0002) was diluted at 1:20000



Immunohistochemical analysis of paraffin-embedded Mouse Pancreas Tissue using TRIM72 Polyclonal Antibody.

Contact information

Orders: order@immunoway.com
Support: tech@immunoway.com
Telephone: 877-594-3616 (Toll Free), 408-747-0185
Website: <http://www.immunoway.com>
Address: 2200 Ringwood Ave San Jose, CA 95131 USA



Please scan the QR code to access additional product information:
TRIM72 Rabbit pAb

