

FCERG Rabbit pAb

CatalogNo: YN4336

Key Features

Host Species

- Rabbit

Reactivity

- Human, Mouse, Rat

Applications

- IHC, IF

MW

- 9kD (Calculated)

Isotype

- IgG

Recommended Dilution Ratios

IHC 1:50-200

IF 1:50-200

Storage

Storage* -15°C to -25°C/1 year (Do not lower than -25°C)

Formulation Liquid in PBS containing 50% glycerol, 0.5% BSA and 0.02% sodium azide.

Basic Information

Clonality Polyclonal

Immunogen Information

Immunogen Synthesized peptide derived from human FCERG AA range: 31-81

Specificity This antibody detects endogenous levels of FCERG at Human/Mouse/Rat

Target Information

Gene name FCER1G

Protein Name FCERG

Organism	Gene ID	UniProt ID
Human	2207;	P30273;
Mouse	14127;	P20491;
Rat	25441;	P20411;

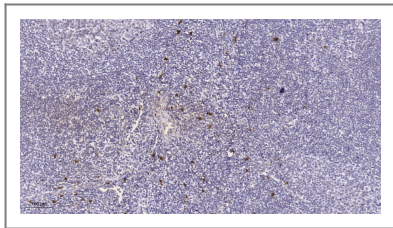
**Cellular
Localization**

Cell membrane ; Single-pass type I membrane protein .

Function

Function:Associates with a variety of FcR alpha chains to form a functional signaling complex. Regulates several aspects of the immune response. The gamma subunit has a critical role in allowing the IgE Fc receptor to reach the cell surface.,similarity:Belongs to the CD3Z/FCER1G family.,similarity:Contains 1 ITAM domain.,subunit:IgE Fc receptor is a tetramer of an alpha chain, a beta chain, and two disulfide linked gamma chains. The gamma chain from Fc-epsilon-Ri are also subunits of other Fc receptors like FCGR1A.,

| Validation Data



Immunohistochemical analysis of paraffin-embedded human tonsil. 1, Tris-EDTA,pH9.0 was used for antigen retrieval. 2 Antibody was diluted at 1:200(4° overnight.3,Secondary antibody was diluted at 1:200(room temperature, 45min).

| Contact information

Orders: order@immunoway.com
Support: tech@immunoway.com
Telephone: 877-594-3616 (Toll Free), 408-747-0185
Website: <http://www.immunoway.com>
Address: 2200 Ringwood Ave San Jose, CA 95131 USA



Please scan the QR code to access additional product information:
FCERG Rabbit pAb

For Research Use Only. Not for Use in Diagnostic Procedures.

[Antibody](#) | [ELISA Kits](#) | [Protein](#) | [Reagents](#)