

## PC11X Rabbit pAb

CatalogNo: YN4329

### Key Features

#### Host Species

- Rabbit

#### Reactivity

- Human

#### Applications

- WB

#### MW

- 148kD (Calculated)

#### Isotype

- IgG

### Recommended Dilution Ratios

WB 1:500-2000

### Storage

**Storage\*** -15°C to -25°C/1 year(Do not lower than -25°C)

**Formulation** Liquid in PBS containing 50% glycerol, 0.5% BSA and 0.02% sodium azide.

### Basic Information

**Clonality** Polyclonal

### Immunogen Information

**Immunogen** Synthesized peptide derived from human PC11X AA range: 836-886

**Specificity** This antibody detects endogenous levels of PC11X at Human

### Target Information

**Gene name** PCDH11X KIAA1326 PCDH11 PCDHX

**Protein Name** PC11X

**Organism**

Human

**Gene ID**

[27328;](#)

**UniProt ID**

[Q9BZA7;](#)

**Cellular  
Localization**

Cell membrane ; Single-pass type I membrane protein .

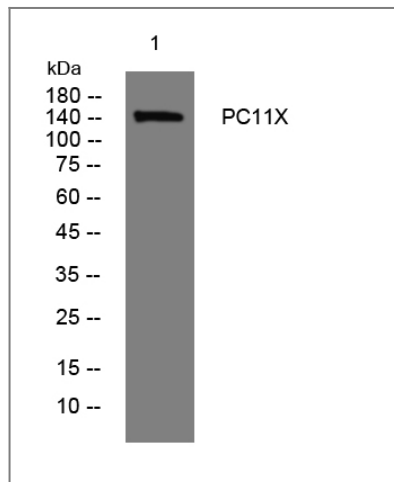
**Tissue specificity**

Expressed strongly in fetal brain and brain (cortex, amygdala, thalamus, substantia nigra, hippocampus, caudate nucleus and corpus callosum). Expressed at low level in testis.

**Function**

Alternative products:Additional isoforms seem to exist,Function:Potential calcium-dependent cell-adhesion protein.,similarity:Contains 7 cadherin domains.,tissue specificity:Expressed strongly in fetal brain and brain (cortex, amygdala, thalamus, substantia nigra, hippocampus, caudate nucleus and corpus callosum). Expressed at low level in testis.,

## Validation Data



Western blot analysis of lysates from CACO2 cells, primary antibody was diluted at 1:1000, 4° over night

## Contact information

Orders: [order@immunoway.com](mailto:order@immunoway.com)  
Support: [tech@immunoway.com](mailto:tech@immunoway.com)  
Telephone: 877-594-3616 (Toll Free), 408-747-0185  
Website: <http://www.immunoway.com>  
Address: 2200 Ringwood Ave San Jose, CA 95131 USA



Please scan the QR code to access additional product information:  
**PC11X Rabbit pAb**