

CJ076 Rabbit pAb

CatalogNo: YN4321

| Key Features

Host Species

- Rabbit

Reactivity

- Human, Mouse

Applications

- WB

MW

- 76kD (Calculated)

Isotype

- IgG

| Recommended Dilution Ratios

WB 1:500-2000

| Storage

Storage*

-15°C to -25°C/1 year (Do not lower than -25°C)

Formulation

Liquid in PBS containing 50% glycerol, 0.5% BSA and 0.02% sodium azide.

| Basic Information

Clonality

Polyclonal

| Immunogen Information

Immunogen

Synthesized peptide derived from human CJ076 AA range: 135-185

Specificity

This antibody detects endogenous levels of CJ076 at Human/Mouse

| Target Information

Gene name

C10orf76

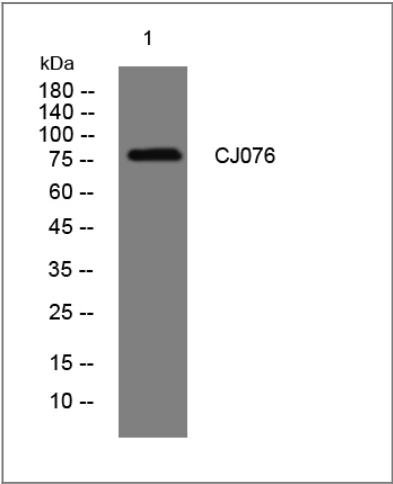
Protein Name CJ076

Organism	Gene ID	UniProt ID
Human	79591 ;	Q5T2E6 ;
Mouse	71617 ;	Q6PD19 ;

Cellular Localization Golgi apparatus membrane ; Single-pass membrane protein . Cytoplasm . The majority of ARMD3 is cytosolic, with a portion colocalizing with GBF1 at juxtanuclear Golgi sites. .

Function similarity:Belongs to the UPF0668 family.,

| Validation Data



Western blot analysis of lysates from HCT116 cells, primary antibody was diluted at 1:1000, 4°over night

| Contact information

Orders: order@immunoway.com
Support: tech@immunoway.com
Telephone: 877-594-3616 (Toll Free), 408-747-0185
Website: http://www.immunoway.com
Address: 2200 Ringwood Ave San Jose, CA 95131 USA



Please scan the QR code to access additional product information:
CJ076 Rabbit pAb

For Research Use Only. Not for Use in Diagnostic Procedures.

[Antibody](#) | [ELISA Kits](#) | [Protein](#) | [Reagents](#)