

LUC7L Rabbit pAb

CatalogNo: YN4318

Key Features

Host Species

- Rabbit

Reactivity

- Human, Mouse

Applications

- WB

MW

- 41kD (Calculated)

Isotype

- IgG

Recommended Dilution Ratios

WB 1:500-2000

Storage

Storage*

-15°C to -25°C/1 year (Do not lower than -25°C)

Formulation

Liquid in PBS containing 50% glycerol, 0.5% BSA and 0.02% sodium azide.

Basic Information

Clonality

Polyclonal

Immunogen Information

Immunogen

Synthesized peptide derived from human LUC7L AA range: 43-93

Specificity

This antibody detects endogenous levels of LUC7L at Human/Mouse

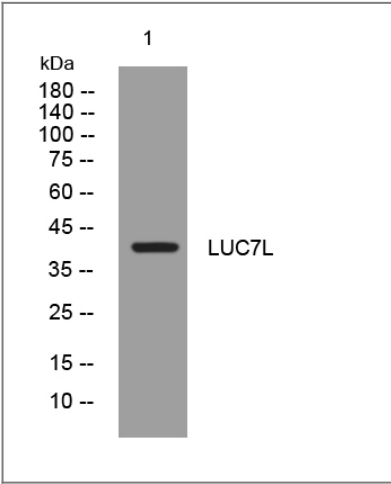
Target Information

Gene name

LUC7L LUC7L1

Protein Name	LUC7L		
	Organism	Gene ID	UniProt ID
	Human	55692;	Q9NQ29;
	Mouse	66978;	Q9CYI4;
Cellular Localization	U1 snRNP,U2-type prespliceosome,		
Tissue specificity	Ubiquitous.		
Function	Function:May bind to RNA via its Arg/Ser-rich domain.,similarity:Belongs to the Luc7 family.,similarity:Contains 1 C2H2-type zinc finger.,tissue specificity:Ubiquitous.,		

| Validation Data



Western blot analysis of lysates from CACO2 cells, primary antibody was diluted at 1:1000, 4°over night

| Contact information

Orders: order@immunoway.com
Support: tech@immunoway.com
Telephone: 877-594-3616 (Toll Free), 408-747-0185
Website: http://www.immunoway.com
Address: 2200 Ringwood Ave San Jose, CA 95131 USA



Please scan the QR code to access additional product information:
LUC7L Rabbit pAb