

PFD2 Rabbit pAb

CatalogNo: YN4308

| Key Features

Host Species

- Rabbit

Reactivity

- Human, Mouse, Rat

Applications

- WB

MW

- 17kD (Calculated)

Isotype

- IgG

| Recommended Dilution Ratios

WB 1:500-2000

| Storage

Storage* -15°C to -25°C/1 year (Do not lower than -25°C)

Formulation Liquid in PBS containing 50% glycerol, 0.5% BSA and 0.02% sodium azide.

| Basic Information

Clonality Polyclonal

| Immunogen Information

Immunogen Synthesized peptide derived from human PFD2 AA range: 81-131

Specificity This antibody detects endogenous levels of PFD2 at Human/Mouse/Rat

| Target Information

Gene name PFDN2 PFD2 HSPC231

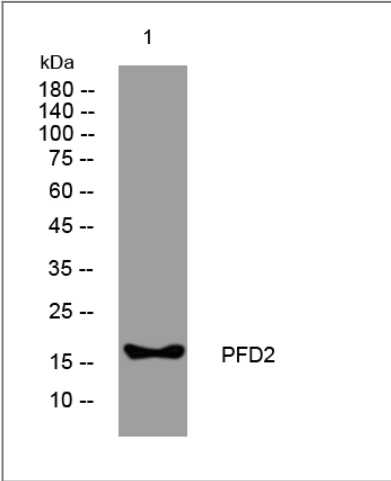
Protein Name PFD2

Organism	Gene ID	UniProt ID
Human	5202;	Q9UHV9;
Mouse	18637;	O70591;
Rat	685607;	B0BN18;

Cellular Localization Nucleus . Cytoplasm . Mitochondrion .

Function: Binds specifically to cytosolic chaperonin (c-CPN) and transfers target proteins to it. Binds to nascent polypeptide chain and promotes folding in an environment in which there are many competing pathways for nonnative proteins., similarity: Belongs to the prefoldin subunit beta family., subunit: Heterohexamer of two PFD-alpha type and four PFD-beta type subunits.,

Validation Data



Western blot analysis of lysates from U2OS cells, primary antibody was diluted at 1:1000, 4° over night

Contact information

Orders: order@immunoway.com
Support: tech@immunoway.com
Telephone: 877-594-3616 (Toll Free), 408-747-0185
Website: http://www.immunoway.com
Address: 2200 Ringwood Ave San Jose, CA 95131 USA



Please scan the QR code to access additional product information:
PFD2 Rabbit pAb