

## TRY6 Rabbit pAb

CatalogNo: YN4294

### Key Features

#### Host Species

- Rabbit

#### Reactivity

- Human

#### Applications

- WB

#### MW

- 27kD (Calculated)

#### Isotype

- IgG

### Recommended Dilution Ratios

WB 1:500-2000

### Storage

#### Storage\*

-15°C to -25°C/1 year(Do not lower than -25°C)

#### Formulation

Liquid in PBS containing 50% glycerol, 0.5% BSA and 0.02% sodium azide.

### Basic Information

#### Clonality

Polyclonal

### Immunogen Information

#### Immunogen

Synthesized peptide derived from human TRY6 AA range: 21-71

#### Specificity

This antibody detects endogenous levels of TRY6 at Human

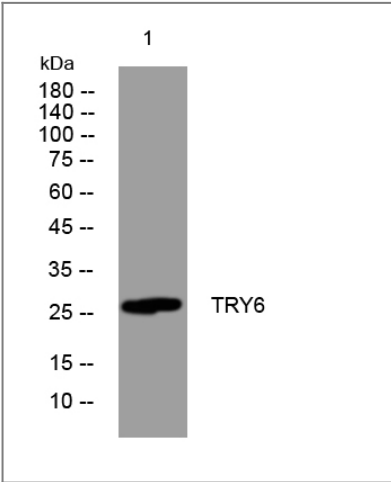
### Target Information

#### Gene name

TRY6 T6

Protein Name	TRY6		
	Organism	Gene ID	UniProt ID
	Human		<a href="#">Q8NHM4</a> ;
Cellular Localization	Secreted .		
Tissue specificity	Overexpressed in metastasing in non small cell lung tumors, leading to an enhanced cell migration.		
Function	Catalytic activity:Preferential cleavage: Arg- -Xaa, Lys- -Xaa.,Caution:Tyr-154 was proposed to be phosphorylated (PubMed:8683601) but it has been shown (PubMed:17087724) to be sulfated instead. Phosphate and sulfate groups are similar in mass and size, and this can lead to erroneous interpretation of the results.,cofactor:Binds 1 calcium ion per subunit.,Disease:Defects in PRSS1 are a cause of hereditary pancreatitis (HPC) [MIM:167800]; also known as chronic pancreatitis (CP). HPC is an autosomal dominant disease characterized by the presence of calculi in pancreatic ducts. It causes severe abdominal pain attacks.,Function:Has activity against the synthetic substrates Boc-Phe-Ser-Arg-Mec, Boc-Leu-Thr-Arg-Mec, Boc-Gln-Ala-Arg-Mec and Boc-Val-Pro-Arg-Mec. The single-chain form is more active than the two-chain form against all of these substrates.,mass spectrometry: PubMed:8683601,PTM:Occurs in a single-chain form and a two-chain form, produced by proteolytic cleavage after Arg-122.,similarity:Belongs to the peptidase S1 family.,similarity:Contains 1 peptidase S1 domain.,		

Validation Data



Western blot analysis of lysates from SW480 cells, primary antibody was diluted at 1:1000, 4°over night

Contact information

Orders: order@immunoway.com  
Support: tech@immunoway.com  
Telephone: 877-594-3616 (Toll Free), 408-747-0185  
Website: http://www.immunoway.com  
Address: 2200 Ringwood Ave San Jose, CA 95131 USA



Please scan the QR code  
to access additional  
product information:  
**TRY6 Rabbit pAb**

---

For Research Use Only. Not for Use in Diagnostic Procedures.

[Antibody](#) | [ELISA Kits](#) | [Protein](#) | [Reagents](#)