

S35A3 Rabbit pAb

CatalogNo: YN4268

Key Features

Host Species

- Rabbit

Reactivity

- Human, Mouse, Rat

Applications

- WB

MW

- 36kD (Calculated)

Isotype

- IgG

Storage

Storage* -15°C to -25°C/1 year (Do not lower than -25°C)**Formulation** Liquid in PBS containing 50% glycerol, 0.5% BSA and 0.02% sodium azide.

Recommended Dilution Ratios

WB 1:500-2000

Basic Information

Clonality Polyclonal

Immunogen Information

Immunogen Synthesized peptide derived from human S35A3 AA range: 263-313**Specificity** This antibody detects endogenous levels of S35A3 at Human/Mouse/Rat

Target Information

Gene name SLC35A3

Protein Name S35A3

Organism	Gene ID	UniProt ID
Human	23443;	Q9Y2D2;
Mouse	229782;	Q8R1T4;
Rat	310808;	Q6AXR5;

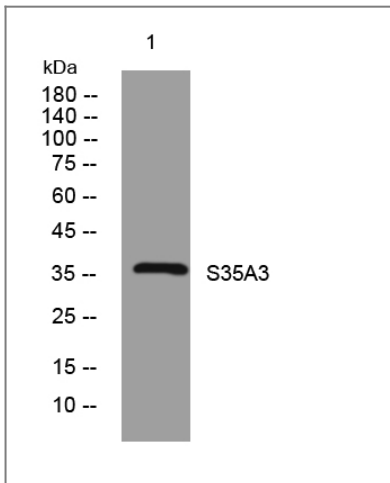
Cellular Localization

Golgi apparatus membrane ; Multi-pass membrane protein .

Function

Function:Uridine diphosphate-N-acetylglucosamine transporter in the Golgi apparatus.,online information:GlycoGene database,similarity:Belongs to the nucleotide-sugar transporter family. SLC35A subfamily.,

Validation Data



Western blot analysis of lysates from 3T3 cells, primary antibody was diluted at 1:1000, 4°over night

Contact information

Orders: order@immunoway.com
Support: tech@immunoway.com
Telephone: 877-594-3616 (Toll Free), 408-747-0185
Website: <http://www.immunoway.com>
Address: 2200 Ringwood Ave San Jose, CA 95131 USA



Please scan the QR code to access additional product information:
S35A3 Rabbit pAb