

ZSC29 Rabbit pAb

CatalogNo: YN4252

| Key Features

Host Species

- Rabbit

Reactivity

- Human

Applications

- WB

MW

- 94kD (Calculated)

Isotype

- IgG

| Recommended Dilution Ratios

WB 1:500-2000

| Storage

Storage* -15°C to -25°C/1 year(Do not lower than -25°C)

Formulation Liquid in PBS containing 50% glycerol, 0.5% BSA and 0.02% sodium azide.

| Basic Information

Clonality Polyclonal

| Immunogen Information

Immunogen Synthesized peptide derived from human ZSC29 AA range: 409-459

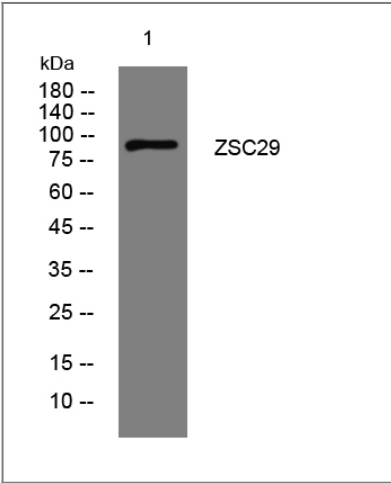
Specificity This antibody detects endogenous levels of ZSC29 at Human

| Target Information

Gene name ZSCAN29 ZNF690

Protein Name	ZSC29		
	Organism	Gene ID	UniProt ID
	Human	146050;	Q8IWH8;
Cellular Localization	Nucleus .		
Function	Function:May be involved in transcriptional regulation.,similarity:Belongs to the krueppel C2H2-type zinc-finger protein family.,similarity:Contains 1 SCAN box domain.,similarity:Contains 6 C2H2-type zinc fingers.,		

Validation Data



Western blot analysis of lysates from K562 cells, primary antibody was diluted at 1:1000, 4°over night

Contact information

Orders: order@immunoway.com
Support: tech@immunoway.com
Telephone: 877-594-3616 (Toll Free), 408-747-0185
Website: http://www.immunoway.com
Address: 2200 Ringwood Ave San Jose, CA 95131 USA



Please scan the QR code to access additional product information:
ZSC29 Rabbit pAb