

## RSLBA Rabbit pAb

CatalogNo: YN4247

### | Key Features

#### Host Species

- Rabbit

#### Reactivity

- Human, Mouse, Rat

#### Applications

- WB

#### MW

- 27kD (Calculated)

#### Isotype

- IgG

### | Recommended Dilution Ratios

WB 1:500-2000

### | Storage

#### Storage\*

-15°C to -25°C/1 year (Do not lower than -25°C)

#### Formulation

Liquid in PBS containing 50% glycerol, 0.5% BSA and 0.02% sodium azide.

### | Basic Information

#### Clonality

Polyclonal

### | Immunogen Information

#### Immunogen

Synthesized peptide derived from human RSLBA AA range: 68-118

#### Specificity

This antibody detects endogenous levels of RSLBA at Human/Mouse/Rat

### | Target Information

#### Gene name

RASL11A

**Protein Name** RSLBA

Organism	Gene ID	UniProt ID
Human	<a href="#">387496;</a>	<a href="#">Q6T310;</a>
Mouse	<a href="#">68895;</a>	<a href="#">Q6IMB1;</a>
Rat	<a href="#">304268;</a>	<a href="#">Q6IMA3;</a>

**Cellular Localization**

Nucleus, nucleolus . Associates with rDNA transcription unit throughout the cell cycle. .

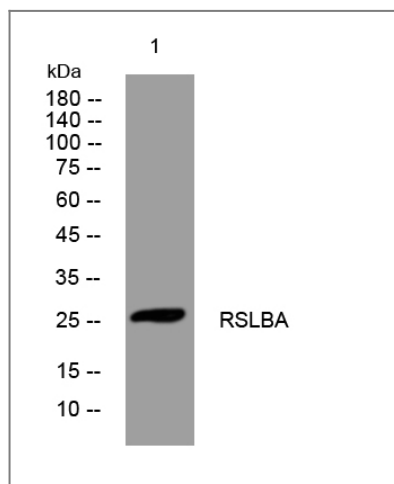
**Tissue specificity**

Widely expressed. Down-regulated in prostate tumors compared to normal prostate tissue. High levels found in colon tumor and normal colon tissue followed by small intestine, liver, jejunum, ileum, bladder and aorta. Lowest levels observed in endothelial cells.

**Function**

developmental stage:Down-regulated during development of THP-1 monocytes into macrophages.,induction:Down-regulated by TGFB1.,similarity:Belongs to the small GTPase superfamily. Ras family.,tissue specificity:Widely expressed. Down-regulated in prostate tumors compared to normal prostate tissue. High levels found in colon tumor and normal colon tissue followed by small intestine, liver, jejunum, ileum, bladder and aorta. Lowest levels observed in endothelial cells.,

## Validation Data



Western blot analysis of lysates from 3T3 cells, primary antibody was diluted at 1:1000, 4°over night

## Contact information

Orders: [order@immunoway.com](mailto:order@immunoway.com)  
Support: [tech@immunoway.com](mailto:tech@immunoway.com)  
Telephone: 877-594-3616 (Toll Free), 408-747-0185  
Website: <http://www.immunoway.com>  
Address: 2200 Ringwood Ave San Jose, CA 95131 USA



Please scan the QR code to access additional product information:  
**RSLBA Rabbit pAb**

