

NT5D3 Rabbit pAb

CatalogNo: YN4237

| Key Features

Host Species

- Rabbit

Reactivity

- Human, Mouse

Applications

- WB

MW

- 60kD (Calculated)

Isotype

- IgG

| Recommended Dilution Ratios

WB 1:500-2000

| Storage

Storage* -15°C to -25°C/1 year (Do not lower than -25°C)

Formulation Liquid in PBS containing 50% glycerol, 0.5% BSA and 0.02% sodium azide.

| Basic Information

Clonality Polyclonal

| Immunogen Information

Immunogen Synthesized peptide derived from human NT5D3 AA range: 227-277

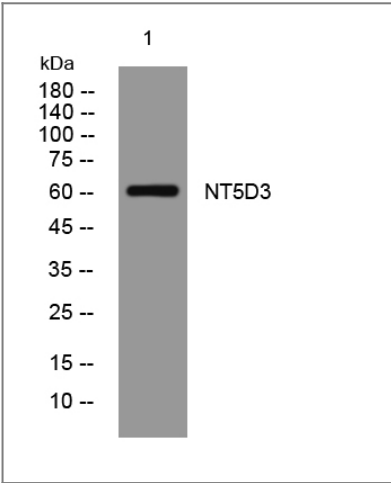
Specificity This antibody detects endogenous levels of NT5D3 at Human/Mouse

| Target Information

Gene name NT5DC3 GNN TU12B1-TY

| | | | |
|------------------------------|--|--------------------------|--------------------------|
| Protein Name | NT5D3 | | |
| | Organism | Gene ID | UniProt ID |
| | Human | 51559 ; | Q86UY8 ; |
| | Mouse | 103466 ; | Q3UHB1 ; |
| Cellular Localization | mitochondrion,cytosol,receptor complex, | | |
| Tissue specificity | Expressed in brain, placenta, skeletal muscle, pancreas, testis, uterus, and small intestine. Reduced expression in pancreatic cancer cells. | | |
| Function | cofactor: Binds 1 magnesium ion per subunit.,developmental stage: Expression was increased in 2 acute myeloid leukemia clusters.,Disease: Reduced function may contribute to the development and/or progression of pancreatic cancer.,similarity: Belongs to the 5'(3')-deoxyribonucleotidase family.,tissue specificity: Expressed in brain, placenta, skeletal muscle, pancreas, testis, uterus, and small intestine., | | |

| Validation Data



Western blot analysis of lysates from A431 cells, primary antibody was diluted at 1:1000, 4°over night

| Contact information

Orders:

order@immunoway.com

Support:

tech@immunoway.com

Telephone:

877-594-3616 (Toll Free), 408-747-0185

Website:

http://www.immunoway.com

Address:

2200 Ringwood Ave San Jose, CA 95131 USA



Please scan the QR code to access additional product information:
NT5D3 Rabbit pAb

