

EXOS2 Rabbit pAb

CatalogNo: YN4230

| Key Features

Host Species

- Rabbit

Reactivity

- Human, Mouse

Applications

- WB

MW

- 32kD (Calculated)

Isotype

- IgG

| Recommended Dilution Ratios

WB 1:500-2000

| Storage

Storage* -15°C to -25°C/1 year (Do not lower than -25°C)

Formulation Liquid in PBS containing 50% glycerol, 0.5% BSA and 0.02% sodium azide.

| Basic Information

Clonality Polyclonal

| Immunogen Information

Immunogen Synthesized peptide derived from human EXOS2 AA range: 90-140

Specificity This antibody detects endogenous levels of EXOS2 at Human/Mouse

| Target Information

Gene name EXOSC2 RRP4

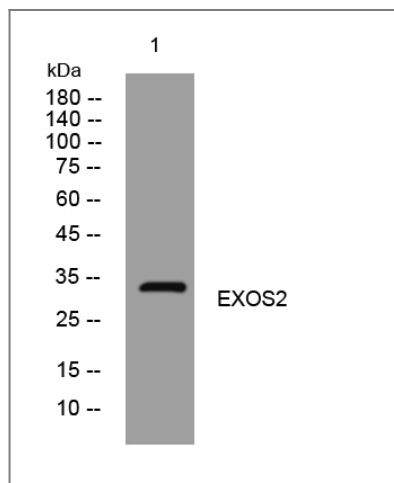
Protein Name EXOS2

Organism	Gene ID	UniProt ID
Human	23404;	Q13868;
Mouse	227715;	Q8VBV3;

Cellular Localization Cytoplasm. Nucleus, nucleolus. Nucleus.

Function Function:Component of the exosome 3'->5' exoribonuclease complex, a complex that degrades inherently unstable mRNAs containing AU-rich elements (AREs) within their 3' untranslated regions. Required for the 3' processing of the 7S pre-rRNA to the mature 5.8S rRNA. Has a 3'-5' exonuclease activity.,similarity:Contains 1 S1 motif domain.,subunit:Component of the exosome multienzyme ribonuclease complex composed of at least 11 proteins: EXOSC1/CSL4, EXOSC2/RRP4, EXOSC3/RRP40, EXOSC4/RRP41, EXOSC5/RRP46, EXOSC6/MTR3, EXOSC7/RRP42, EXOSC8/RRP43, EXOSC9/Scl-75, DIS3/RRP44, and EXOSC10/Scl-100 (only in the nuclear complex). Found in a mRNA decay complex with RENT1, RENT2 and RENT3B. Also associated with the GTPase Ran.,

Validation Data



Western blot analysis of lysates from MCF-7 cells, primary antibody was diluted at 1:1000, 4° over night

Contact information

Orders: order@immunoway.com
Support: tech@immunoway.com
Telephone: 877-594-3616 (Toll Free), 408-747-0185
Website: <http://www.immunoway.com>
Address: 2200 Ringwood Ave San Jose, CA 95131 USA



Please scan the QR code to access additional product information:
EXOS2 Rabbit pAb

