

GPT Rabbit pAb

CatalogNo: YN4210

| Key Features

Host Species

- Rabbit

Reactivity

- Human, Mouse

Applications

- WB

MW

- 45kD (Calculated)

Isotype

- IgG

| Recommended Dilution Ratios

WB 1:500-2000

| Storage

Storage*

-15°C to -25°C/1 year (Do not lower than -25°C)

Formulation

Liquid in PBS containing 50% glycerol, 0.5% BSA and 0.02% sodium azide.

| Basic Information

Clonality

Polyclonal

| Immunogen Information

Immunogen

Synthesized peptide derived from human GPT AA range: 209-259

Specificity

This antibody detects endogenous levels of GPT at Human/Mouse

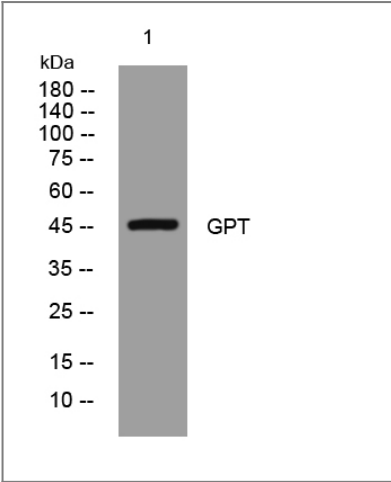
| Target Information

Gene name

DPAGT1 DPAGT2

Protein Name	GPT		
	Organism	Gene ID	UniProt ID
	Human	1798;	Q9H3H5;
	Mouse	13478;	P42867;
Cellular Localization	Endoplasmic reticulum membrane; Multi-pass membrane protein .		
Function	<p>Catalytic activity:UDP-N-acetyl-D-glucosamine + dolichyl phosphate = UMP + N-acetyl-D-glucosaminyl-diphosphodolichol.,Disease:Defects in DPAGT1 are the cause of congenital disorder of glycosylation type 1J (CDG1J) [MIM:608093]. CDGs are a family of severe inherited diseases caused by a defect in protein N-glycosylation. They are characterized by under-glycosylated serum proteins. These multisystem disorders present with a wide variety of clinical features, such as disorders of the nervous system development, psychomotor retardation, dysmorphic features, hypotonia, coagulation disorders, and immunodeficiency. The broad spectrum of features reflects the critical role of N-glycoproteins during embryonic development, differentiation, and maintenance of cell functions.,Function:Catalyzes the initial step in the synthesis of dolichol-P-P-oligosaccharides.,online information:GlycoGene database,online information:UDP-N-acetylglucosamine--dolichyl-phosphate N-acetylglucosaminophosphotransferase,pathway:Protein modification; protein glycosylation.,similarity:Belongs to the glycosyltransferase 4 family.,</p>		

Validation Data



Western blot analysis of lysates from HuvEc cells, primary antibody was diluted at 1:1000, 4°over night

Contact information

Orders: order@immunoway.com
Support: tech@immunoway.com
Telephone: 877-594-3616 (Toll Free), 408-747-0185
Website: http://www.immunoway.com
Address: 2200 Ringwood Ave San Jose, CA 95131 USA



Please scan the QR code
to access additional
product information:
GPT Rabbit pAb

For Research Use Only. Not for Use in Diagnostic Procedures.

[Antibody](#) | [ELISA Kits](#) | [Protein](#) | [Reagents](#)