

WFKN2 Rabbit pAb

CatalogNo: YN4205

Key Features

Host Species

- Rabbit

Reactivity

- Human, Mouse

Applications

- WB

MW

- 63kD (Calculated)

Isotype

- IgG

Recommended Dilution Ratios

WB 1:500-2000

Storage

Storage*

-15°C to -25°C/1 year (Do not lower than -25°C)

Formulation

Liquid in PBS containing 50% glycerol, 0.5% BSA and 0.02% sodium azide.

Basic Information

Clonality

Polyclonal

Immunogen Information

Immunogen

Synthesized peptide derived from human WFKN2 AA range: 506-556

Specificity

This antibody detects endogenous levels of WFKN2 at Human/Mouse

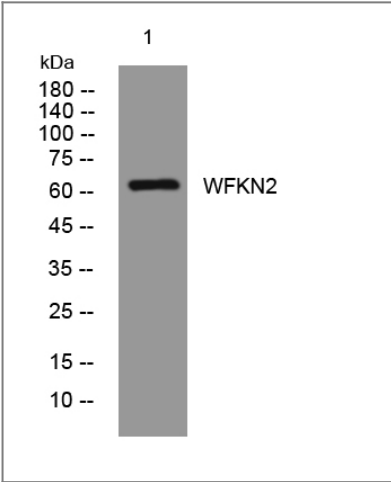
Target Information

Gene name

WFIKKN2 GASP1 WFIKKNRP UNQ9235/PRO31996

| | | | |
|------------------------------|---|--------------------------|--------------------------|
| Protein Name | WFKN2 | | |
| | Organism | Gene ID | UniProt ID |
| | Human | 124857 ; | Q8TEU8 ; |
| | Mouse | 278507 ; | Q7TQN3 ; |
| Cellular Localization | Secreted . | | |
| Tissue specificity | Primarily expressed in ovary, testis and brain, but not in liver. In fetal tissues, it is primarily expressed in brain, skeletal muscle, thymus and kidney. | | |
| Function | Function:Protease-inhibitor that contains multiple distinct protease inhibitor domains. Probably has serine protease- and metalloprotease-inhibitor activity. Inhibits the biological activity of mature myostatin, but not activin.,similarity:Belongs to the WFIKKN family.,similarity:Contains 1 BPTI/Kunitz inhibitor domain.,similarity:Contains 1 Ig-like C2-type (immunoglobulin-like) domain.,similarity:Contains 1 Kazal-like domain.,similarity:Contains 1 NTR domain.,similarity:Contains 1 WAP domain.,similarity:Contains 2 BPTI/Kunitz inhibitor domains.,subunit:Interacts with both mature and propeptide myostatin/MSTN.,tissue specificity:Primarily expressed in ovary, testis and brain, but not in liver. In fetal tissues, it is primarily expressed in brain, skeletal muscle, thymus and kidney., | | |

Validation Data



Western blot analysis of lysates from Hela cells, primary antibody was diluted at 1:1000, 4°over night

Contact information

Orders: order@immunoway.com
 Support: tech@immunoway.com
 Telephone: 877-594-3616 (Toll Free), 408-747-0185
 Website: http://www.immunoway.com
 Address: 2200 Ringwood Ave San Jose, CA 95131 USA



Please scan the QR code to access additional product information:
WFKN2 Rabbit pAb

