

ATS3 Rabbit pAb

CatalogNo: YN4204

| Key Features

Host Species

- Rabbit

Reactivity

- Human

Applications

- WB

MW

- 133kD (Calculated)

Isotype

- IgG

| Recommended Dilution Ratios

WB 1:500-2000

| Storage

Storage*

-15°C to -25°C/1 year(Do not lower than -25°C)

Formulation

Liquid in PBS containing 50% glycerol, 0.5% BSA and 0.02% sodium azide.

| Basic Information

Clonality

Polyclonal

| Immunogen Information

Immunogen

Synthesized peptide derived from human ATS3 AA range: 600-650

Specificity

This antibody detects endogenous levels of ATS3 at Human

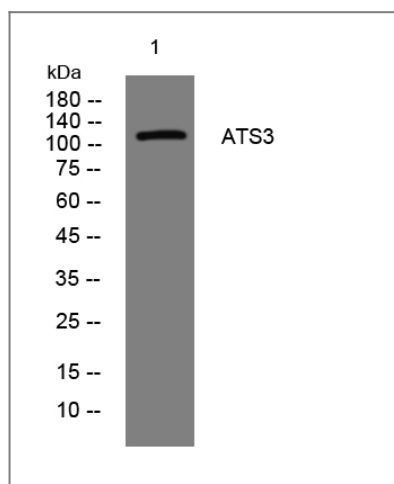
| Target Information

Gene name

ADAMTS3 KIAA0366

Protein Name	ATS3		
	Organism	Gene ID	UniProt ID
	Human	9508;	O15072;
Cellular Localization	Secreted . Secreted, extracellular space, extracellular matrix .		
Tissue specificity	Found in cartilage and skin.		
Function	Caution:Has sometimes been referred to as ADAMTS4.,cofactor:Binds 1 zinc ion per subunit.,Domain:The spacer domain and the TSP type-1 domains are important for a tight interaction with the extracellular matrix.,Function:Cleaves the propeptides of type II collagen prior to fibril assembly. Does not act on types I and III collagens.,PTM:The precursor is cleaved by a furin endopeptidase.,similarity:Contains 1 disintegrin domain.,similarity:Contains 1 peptidase M12B domain.,similarity:Contains 1 PLAC domain.,similarity:Contains 4 TSP type-1 domains.,tissue specificity:Found in cartilage and skin.,		

Validation Data



Western blot analysis of lysates from HeLa cells, primary antibody was diluted at 1:1000, 4° over night

Contact information

Orders: order@immunoway.com
 Support: tech@immunoway.com
 Telephone: 877-594-3616 (Toll Free), 408-747-0185
 Website: <http://www.immunoway.com>
 Address: 2200 Ringwood Ave San Jose, CA 95131 USA



Please scan the QR code to access additional product information:
ATS3 Rabbit pAb

