

## S35G1 Rabbit pAb

CatalogNo: YN4197

### | Key Features

#### Host Species

- Rabbit

#### Reactivity

- Human, Mouse

#### Applications

- WB

#### MW

- 40kD (Calculated)

#### Isotype

- IgG

### | Recommended Dilution Ratios

WB 1:500-2000

### | Storage

#### Storage\*

-15°C to -25°C/1 year (Do not lower than -25°C)

#### Formulation

Liquid in PBS containing 50% glycerol, 0.5% BSA and 0.02% sodium azide.

### | Basic Information

#### Clonality

Polyclonal

### | Immunogen Information

#### Immunogen

Synthesized peptide derived from human S35G1 AA range: 14-64

#### Specificity

This antibody detects endogenous levels of S35G1 at Human/Mouse

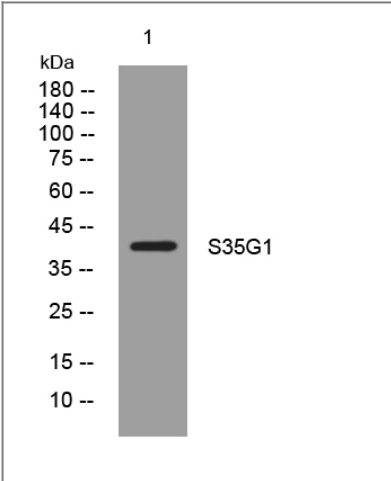
### | Target Information

#### Gene name

SLC35G1 C10orf60 TMEM20

<b>Protein Name</b>	S35G1		
	<b>Organism</b>	<b>Gene ID</b>	<b>UniProt ID</b>
	Human	<a href="#">159371</a> ;	<a href="#">Q2M3R5</a> ;
	Mouse	<a href="#">240660</a> ;	<a href="#">Q8BY79</a> ;
<b>Cellular Localization</b>	Cell membrane ; Multi-pass membrane protein . Endoplasmic reticulum membrane ; Multi-pass membrane protein . Translocates from the endoplasmic reticulum to the cell membrane in response to a depletion of intracellular calcium and is detected at punctae corresponding to junctions between the endoplasmic reticulum and the cell membrane.		
<b>Tissue specificity</b>	Ubiquitously expressed.		
<b>Function</b>	similarity:Contains 2 DUF6 domains.,		

## Validation Data



Western blot analysis of lysates from Hela cells, primary antibody was diluted at 1:1000, 4°over night

## Contact information

Orders: [order@immunoway.com](mailto:order@immunoway.com)  
 Support: [tech@immunoway.com](mailto:tech@immunoway.com)  
 Telephone: 877-594-3616 (Toll Free), 408-747-0185  
 Website: <http://www.immunoway.com>  
 Address: 2200 Ringwood Ave San Jose, CA 95131 USA



Please scan the QR code  
 to access additional  
 product information:  
**S35G1 Rabbit pAb**