

ONEC3 Rabbit pAb

CatalogNo: YN4170

| Key Features

Host Species

- Rabbit

Reactivity

- Human, Mouse

Applications

- WB

MW

- 54kD (Calculated)

Isotype

- IgG

| Recommended Dilution Ratios

WB 1:500-2000

| Storage

Storage* -15°C to -25°C/1 year (Do not lower than -25°C)

Formulation Liquid in PBS containing 50% glycerol, 0.5% BSA and 0.02% sodium azide.

| Basic Information

Clonality Polyclonal

| Immunogen Information

Immunogen Synthesized peptide derived from human ONEC3 AA range: 113-163

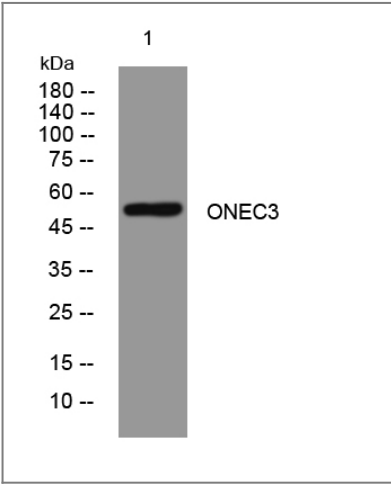
Specificity This antibody detects endogenous levels of ONEC3 at Human/Mouse

| Target Information

Gene name ONECUT3

Protein Name	ONEC3		
	Organism	Gene ID	UniProt ID
	Human	390874;	O60422;
	Mouse	246086;	Q8K557;
Cellular Localization	Nucleus .		
Function	Function:Transcriptional activator. Binds the consensus DNA sequence 5'-DHWATTGAYTWWD-3' on a variety of gene promoters such as those of HNF3B and TTR.,similarity:Contains 1 CUT DNA-binding domain.,similarity:Contains 1 homeobox DNA-binding domain.,		

| Validation Data



Western blot analysis of lysates from A431 cells, primary antibody was diluted at 1:1000, 4°over night

| Contact information

Orders:
Support:
Telephone:
Website:
Address:

order@immunoway.com
tech@immunoway.com
877-594-3616 (Toll Free), 408-747-0185
http://www.immunoway.com
2200 Ringwood Ave San Jose, CA 95131 USA



Please scan the QR code to access additional product information:
ONEC3 Rabbit pAb