

R51A2 Rabbit pAb

CatalogNo: YN4160

Key Features

Host Species

- Rabbit

Reactivity

- Human

Applications

- WB

MW

- 127kD (Calculated)

Isotype

- IgG

Recommended Dilution Ratios

WB 1:500-2000

Storage

Storage*

-15°C to -25°C/1 year(Do not lower than -25°C)

Formulation

Liquid in PBS containing 50% glycerol, 0.5% BSA and 0.02% sodium azide.

Basic Information

Clonality

Polyclonal

Immunogen Information

Immunogen

Synthesized peptide derived from human R51A2 AA range: 409-459

Specificity

This antibody detects endogenous levels of R51A2 at Human

Target Information

Gene name

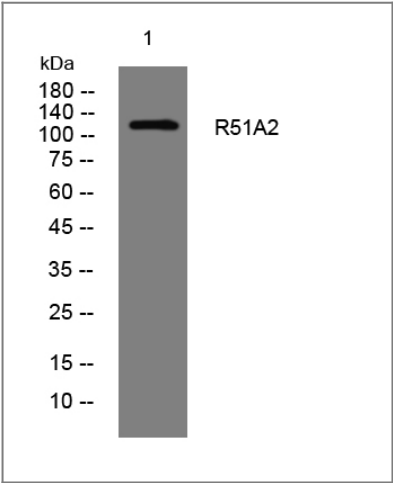
RAD51AP2

Protein Name	R51A2		
	Organism	Gene ID	UniProt ID
	Human	729475 ;	Q09MP3 ;

Tissue specificity
Specifically expressed in meiotic tissues. Highly expressed in testis.

Function
subunit:Interacts with RAD51.,tissue specificity:Specifically expressed in meiotic tissues. Highly expressed in testis.,

Validation Data



Western blot analysis of lysates from SH-SY5Y cells, primary antibody was diluted at 1:1000, 4°over night

Contact information

Orders:
order@immunoway.com

Support:
tech@immunoway.com

Telephone:
877-594-3616 (Toll Free), 408-747-0185

Website:
http://www.immunoway.com

Address:
2200 Ringwood Ave San Jose, CA 95131 USA



Please scan the QR code to access additional product information:

R51A2 Rabbit pAb