

NEPR1 Rabbit pAb

CatalogNo: YN4158

| Key Features

Host Species

- Rabbit

Reactivity

- Human, Mouse

Applications

- WB

MW

- 14kD (Calculated)

Isotype

- IgG

| Recommended Dilution Ratios

WB 1:500-2000

| Storage

Storage* -15°C to -25°C/1 year (Do not lower than -25°C)

Formulation Liquid in PBS containing 50% glycerol, 0.5% BSA and 0.02% sodium azide.

| Basic Information

Clonality Polyclonal

| Immunogen Information

Immunogen Synthesized peptide derived from human NEPR1 AA range: 25-75

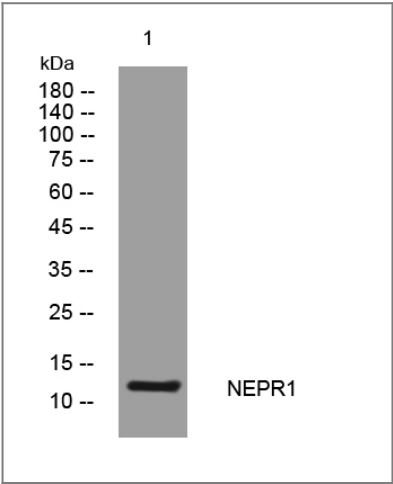
Specificity This antibody detects endogenous levels of NEPR1 at Human/Mouse

| Target Information

Gene name CNEP1R1 C16orf69 TMEM188

Protein Name	NEPR1		
	Organism	Gene ID	UniProt ID
	Human	255919 ;	Q8N9A8 ;
	Mouse	382030 ;	Q3UJ81 ;
Cellular Localization	Nucleus membrane ; Multi-pass membrane protein . Cytoplasm . Filamentous pattern in the cytoplasm.		
Tissue specificity	Muscle specific with lower expression in other metabolic tissues.		
Function	similarity:Belongs to the UPF0427 family.,		

Validation Data



Western blot analysis of lysates from A549 cells, primary antibody was diluted at 1:1000, 4°over night

Contact information

Orders: order@immunoway.com
 Support: tech@immunoway.com
 Telephone: 877-594-3616 (Toll Free), 408-747-0185
 Website: <http://www.immunoway.com>
 Address: 2200 Ringwood Ave San Jose, CA 95131 USA



Please scan the QR code to access additional product information:
NEPR1 Rabbit pAb