

CD048 Rabbit pAb

CatalogNo: YN4152

Key Features

Host Species

- Rabbit

Reactivity

- Human, Mouse

Applications

- IHC, IF

MW

- 10kD (Calculated)

Isotype

- IgG

Storage

Storage* -15°C to -25°C/1 year (Do not lower than -25°C)**Formulation** Liquid in PBS containing 50% glycerol, 0.5% BSA and 0.02% sodium azide.

Recommended Dilution Ratios

IHC 1:50-200**IF 1:50-200**

Basic Information

Clonality Polyclonal

Immunogen Information

Immunogen Synthesized peptide derived from human CD048 AA range: 24-74**Specificity** This antibody detects endogenous levels of CD048 at Human/Mouse

Target Information

Gene name C4orf48 Chr4_55

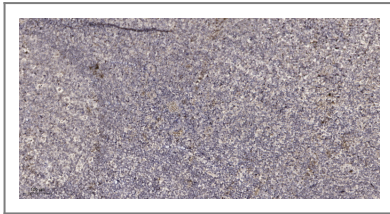
Protein Name CD048

Organism	Gene ID	UniProt ID
Human		Q5BLP8 ;
Mouse	381633 ;	Q3UR78 ;

Cellular Localization Secreted .

Tissue specificity Brain-specific (at protein level).

Validation Data



Immunohistochemical analysis of paraffin-embedded human tonsil. 1, Antibody was diluted at 1:200(4° overnight). 2, Tris-EDTA,pH9.0 was used for antigen retrieval. 3,Secondary antibody was diluted at 1:200(room temperature, 30min).

Contact information

Orders: order@immunoway.com
Support: tech@immunoway.com
Telephone: 877-594-3616 (Toll Free), 408-747-0185
Website: <http://www.immunoway.com>
Address: 2200 Ringwood Ave San Jose, CA 95131 USA



Please scan the QR code to access additional product information:
CD048 Rabbit pAb

For Research Use Only. Not for Use in Diagnostic Procedures.

[Antibody](#) | [ELISA Kits](#) | [Protein](#) | [Reagents](#)