

SG1D1 Rabbit pAb

CatalogNo: YN4118

Key Features

Host Species

- Rabbit

Reactivity

- Human

Applications

- IHC,IF

MW

- 10kD (Calculated)

Isotype

- IgG

Storage

Storage* -15°C to -25°C/1 year(Do not lower than -25°C)

Formulation Liquid in PBS containing 50% glycerol, 0.5% BSA and 0.02% sodium azide.

Recommended Dilution Ratios

IHC 1:50-200

IF 1:50-200

Basic Information

Clonality Polyclonal

Immunogen Information

Immunogen Synthesized peptide derived from human SG1D1 AA range: 18-68

Specificity This antibody detects endogenous levels of SG1D1 at Human

Target Information

Gene name SCGB1D1 LIPHA

Protein Name SG1D1

Organism

Human

Gene ID

[10648](#);

UniProt ID

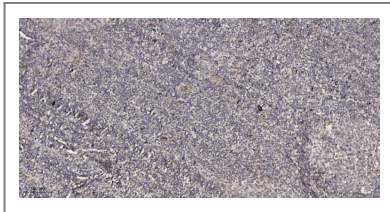
[O95968](#);

Cellular Localization Secreted .

Tissue specificity Expressed in lachrymal gland, thymus, kidney, testis, ovary and salivary gland.

Function Function:May bind androgens and other steroids, may also bind estramustine, a chemotherapeutic agent used for prostate cancer. May be under transcriptional regulation of steroid hormones.,mass spectrometry: PubMed:9720917,similarity:Belongs to the secretoglobin family. Lipophilin subfamily.,subunit:Heterodimer of a lipophilin A and a lipophilin C (mammaglobin B) monomer associated head to head.,tissue specificity:Expressed in lachrymal gland, thymus, kidney, testis, ovary and salivary gland.,

Validation Data



Immunohistochemical analysis of paraffin-embedded human tonsil. 1, Antibody was diluted at 1:200(4° overnight). 2, Tris-EDTA,pH9.0 was used for antigen retrieval. 3,Secondary antibody was diluted at 1:200(room temperature, 30min).

Contact information

Orders: order@immunoway.com
Support: tech@immunoway.com
Telephone: 877-594-3616 (Toll Free), 408-747-0185
Website: <http://www.immunoway.com>
Address: 2200 Ringwood Ave San Jose, CA 95131 USA



Please scan the QR code to access additional product information:
SG1D1 Rabbit pAb

For Research Use Only. Not for Use in Diagnostic Procedures.

[Antibody](#) | [ELISA Kits](#) | [Protein](#) | [Reagents](#)