

NIPA2 Rabbit pAb

CatalogNo: YN4105

| Key Features

Host Species

- Rabbit

Reactivity

- Human, Mouse

Applications

- WB

MW

- 40kD (Calculated)

Isotype

- IgG

| Recommended Dilution Ratios

WB 1:500-2000

| Storage

Storage*

-15°C to -25°C/1 year (Do not lower than -25°C)

Formulation

Liquid in PBS containing 50% glycerol, 0.5% BSA and 0.02% sodium azide.

| Basic Information

Clonality

Polyclonal

| Immunogen Information

Immunogen

Synthesized peptide derived from human NIPA2 AA range: 175-225

Specificity

This antibody detects endogenous levels of NIPA2 at Human/Mouse

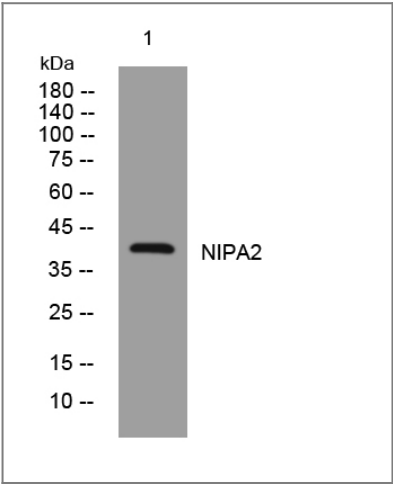
| Target Information

Gene name

NIPA2

Protein Name	NIPA2		
	Organism	Gene ID	UniProt ID
	Human	81614;	Q8N8Q9;
	Mouse	93790;	Q9JJC8;
Cellular Localization	Cell membrane ; Multi-pass membrane protein . Early endosome . Recruited to the cell membrane in response to low extracellular magnesium. .		
Tissue specificity	Widely expressed.		
Function	similarity:Belongs to the NIPA family.,tissue specificity:Widely expressed.,		

Validation Data



Western blot analysis of lysates from U2OS cells, primary antibody was diluted at 1:1000, 4°over night

Contact information

Orders: order@immunoway.com
 Support: tech@immunoway.com
 Telephone: 877-594-3616 (Toll Free), 408-747-0185
 Website: <http://www.immunoway.com>
 Address: 2200 Ringwood Ave San Jose, CA 95131 USA



Please scan the QR code
 to access additional
 product information:
NIPA2 Rabbit pAb