

TMX1 Rabbit pAb

CatalogNo: YN4104

| Key Features

Host Species

- Rabbit

Reactivity

- Human, Mouse

Applications

- WB

MW

- 31kD (Calculated)

Isotype

- IgG

| Recommended Dilution Ratios

WB 1:500-2000

| Storage

Storage* -15°C to -25°C/1 year (Do not lower than -25°C)

Formulation Liquid in PBS containing 50% glycerol, 0.5% BSA and 0.02% sodium azide.

| Basic Information

Clonality Polyclonal

| Immunogen Information

Immunogen Synthesized peptide derived from human TMX1 AA range: 223-273

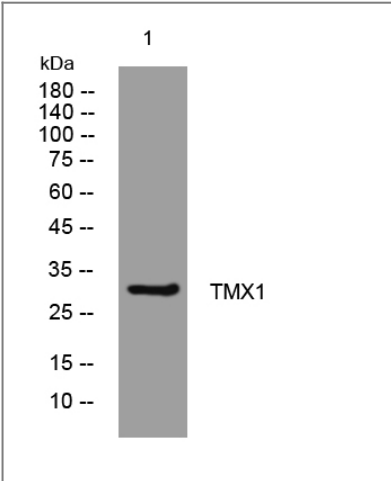
Specificity This antibody detects endogenous levels of TMX1 at Human/Mouse

| Target Information

Gene name TMX1 TMX TXNDC TXNDC1 PSEC0085 UNQ235/PRO268

Protein Name	TMX1		
	Organism	Gene ID	UniProt ID
	Human	81542;	Q9H3N1;
	Mouse	72736;	Q8VBT0;
Cellular Localization	Membrane ; Single-pass type I membrane protein . Endoplasmic reticulum membrane ; Single-pass type I membrane protein . Predominantly found in the endoplasmic reticulum. .		
Tissue specificity	Ubiquitous. Highly expressed in kidney, liver, placenta and lung.		
Function	Function:May participate in various redox reactions through the reversible oxidation of its active center dithiol to a disulfide and catalyze dithiol-disulfide exchange reactions.,similarity:Contains 1 thioredoxin domain.,subcellular location:Predominantly found in the endoplasmic reticulum.,tissue specificity:Ubiquitous. Highly expressed in kidney, liver, placenta and lung.,		

| Validation Data



Western blot analysis of lysates from HpeG2 cells, primary antibody was diluted at 1:1000, 4°over night

| Contact information

Orders: order@immunoway.com
Support: tech@immunoway.com
Telephone: 877-594-3616 (Toll Free), 408-747-0185
Website: http://www.immunoway.com
Address: 2200 Ringwood Ave San Jose, CA 95131 USA



Please scan the QR code to access additional product information:
TMX1 Rabbit pAb