

## KANK4 Rabbit pAb

CatalogNo: YN4075

### Key Features

#### Host Species

- Rabbit

#### Reactivity

- Human, Mouse

#### Applications

- WB

#### MW

- 109kD (Calculated)

#### Isotype

- IgG

### Recommended Dilution Ratios

WB 1:500-2000

### Storage

#### Storage\*

-15°C to -25°C/1 year (Do not lower than -25°C)

#### Formulation

Liquid in PBS containing 50% glycerol, 0.5% BSA and 0.02% sodium azide.

### Basic Information

#### Clonality

Polyclonal

### Immunogen Information

#### Immunogen

Synthesized peptide derived from human KANK4 AA range: 448-498

#### Specificity

This antibody detects endogenous levels of KANK4 at Human/Mouse

### Target Information

#### Gene name

KANK4 ANKRD38

**Protein Name** KANK4

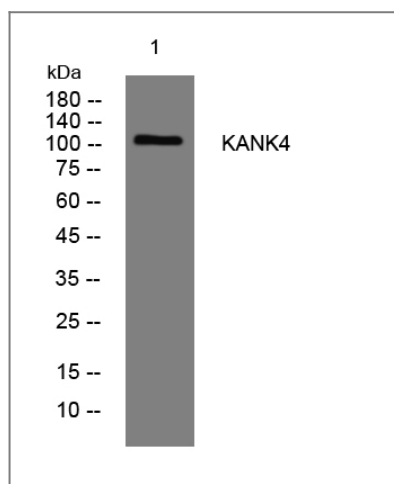
Organism	Gene ID	UniProt ID
Human	<a href="#">163782</a> ;	<a href="#">Q5T7N3</a> ;
Mouse	<a href="#">242553</a> ;	<a href="#">Q6P9J5</a> ;

**Cellular Localization** Cytoplasm .

**Tissue specificity** Strongly expressed in colon, liver, lung, skeletal muscle and kidney.

**Function** similarity:Contains 5 ANK repeats.,

## Validation Data



Western blot analysis of lysates from PC-12 cells, primary antibody was diluted at 1:1000, 4°over night

## Contact information

Orders: [order@immunoway.com](mailto:order@immunoway.com)  
Support: [tech@immunoway.com](mailto:tech@immunoway.com)  
Telephone: 877-594-3616 (Toll Free), 408-747-0185  
Website: <http://www.immunoway.com>  
Address: 2200 Ringwood Ave San Jose, CA 95131 USA



Please scan the QR code to access additional product information:  
**KANK4 Rabbit pAb**