

## ASCC1 Rabbit pAb

CatalogNo: YN4067

### Key Features

#### Host Species

- Rabbit

#### Reactivity

- Human, Mouse

#### Applications

- WB

#### MW

- 44kD (Calculated)

#### Isotype

- IgG

### Recommended Dilution Ratios

WB 1:500-2000

### Storage

#### Storage\*

-15°C to -25°C/1 year (Do not lower than -25°C)

#### Formulation

Liquid in PBS containing 50% glycerol, 0.5% BSA and 0.02% sodium azide.

### Basic Information

#### Clonality

Polyclonal

### Immunogen Information

#### Immunogen

Synthesized peptide derived from human ASCC1 AA range: 289-339

#### Specificity

This antibody detects endogenous levels of ASCC1 at Human/Mouse

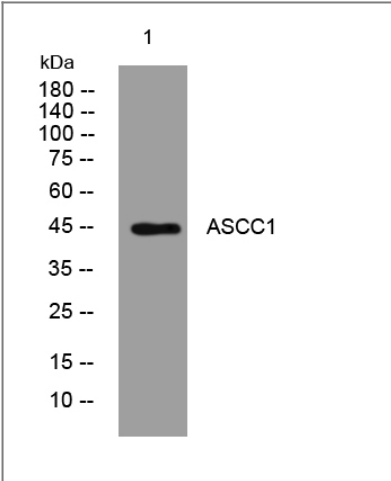
### Target Information

#### Gene name

ASCC1 CGI-18

<b>Protein Name</b>	ASCC1		
	<b>Organism</b>	<b>Gene ID</b>	<b>UniProt ID</b>
	Human	<a href="#">51008</a> ;	<a href="#">Q8N9N2</a> ;
	Mouse	<a href="#">69090</a> ;	<a href="#">Q9D8Z1</a> ;
<b>Cellular Localization</b>	Nucleus . Nucleus speckle . Colocalizes with PRPF8 in nuclear speckles in the absence of DNA damage. .		
<b>Tissue specificity</b>	Ubiquitous.		
<b>Function</b>	Function:Enhances NF-kappa-B, SRF and AP1 transactivation.,similarity:Contains 1 KH domain.,subunit:Part of TRIP4 complex, that contains ASCC1, ASCC2 and ASCC3.,tissue specificity:Ubiquitous.,		

## Validation Data



Western blot analysis of lysates from A549 cells, primary antibody was diluted at 1:1000, 4°over night

## Contact information

Orders: [order@immunoway.com](mailto:order@immunoway.com)  
 Support: [tech@immunoway.com](mailto:tech@immunoway.com)  
 Telephone: 877-594-3616 (Toll Free), 408-747-0185  
 Website: <http://www.immunoway.com>  
 Address: 2200 Ringwood Ave San Jose, CA 95131 USA



Please scan the QR code  
 to access additional  
 product information:  
**ASCC1 Rabbit pAb**