

EST5A Rabbit pAb

CatalogNo: YN4022

Key Features

Host Species

- Rabbit

Reactivity

- Human, Mouse, Rat

Applications

- WB

MW

- 63kD (Calculated)

Isotype

- IgG

Storage

Storage* -15°C to -25°C/1 year (Do not lower than -25°C)**Formulation** Liquid in PBS containing 50% glycerol, 0.5% BSA and 0.02% sodium azide.

Recommended Dilution Ratios

WB 1:500-2000

Basic Information

Clonality Polyclonal

Immunogen Information

Immunogen Synthesized peptide derived from human EST5A AA range: 278-328**Specificity** This antibody detects endogenous levels of EST5A at Human/Mouse/Rat

Target Information

Gene name CES5A CES7

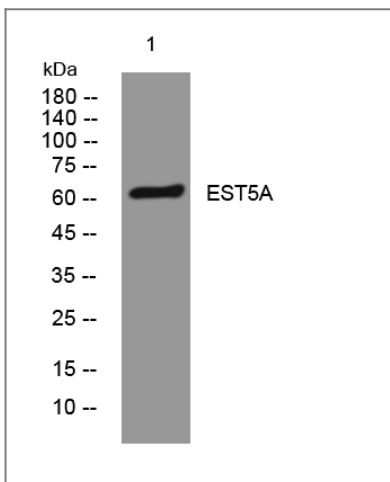
Protein Name EST5A

Organism	Gene ID	UniProt ID
Human	221223 ;	Q6NT32 ;
Mouse	67935 ;	Q6AW46 ;
Rat	307660 ;	Q5GRG2 ;

Cellular Localization Secreted .

Function Catalytic activity:A carboxylic ester + H(2)O = an alcohol + a carboxylate.,Caution:Was named CES5 by Ref.1.,Function:Involved in the detoxification of xenobiotics and in the activation of ester and amide prodrugs.,PTM:N-glycosylated.,similarity:Belongs to the type-B carboxylesterase/lipase family.,

Validation Data



Western blot analysis of lysates from HpeG2 cells, primary antibody was diluted at 1:1000, 4°over night

Contact information

Orders: order@immunoway.com
Support: tech@immunoway.com
Telephone: 877-594-3616 (Toll Free), 408-747-0185
Website: <http://www.immunoway.com>
Address: 2200 Ringwood Ave San Jose, CA 95131 USA



Please scan the QR code to access additional product information:
EST5A Rabbit pAb