

## ARFP2 Rabbit pAb

CatalogNo: YN4012

### | Key Features

#### Host Species

- Rabbit

#### Reactivity

- Human, Mouse, Rat

#### Applications

- WB

#### MW

- 38kD (Calculated)

#### Isotype

- IgG

### | Recommended Dilution Ratios

**WB 1:500-2000**

### | Storage

#### Storage\*

-15°C to -25°C/1 year (Do not lower than -25°C)

#### Formulation

Liquid in PBS containing 50% glycerol, 0.5% BSA and 0.02% sodium azide.

### | Basic Information

#### Clonality

Polyclonal

### | Immunogen Information

#### Immunogen

Synthesized peptide derived from human ARFP2 AA range: 137-187

#### Specificity

This antibody detects endogenous levels of ARFP2 at Human/Mouse/Rat

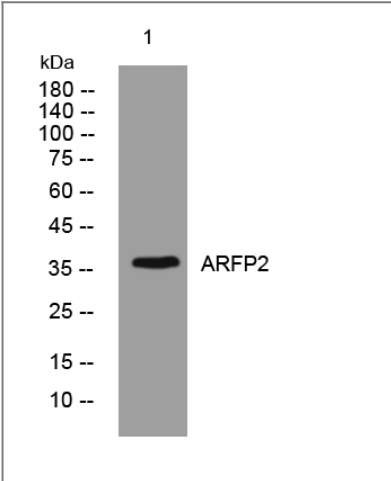
### | Target Information

#### Gene name

ARFIP2 POR1

Protein Name	ARFP2		
	Organism	Gene ID	UniProt ID
	Human	<a href="#">23647;</a>	<a href="#">P53365;</a>
	Mouse	<a href="#">76932;</a>	<a href="#">Q8K221;</a>
	Rat	<a href="#">293344;</a>	<a href="#">Q6AY65;</a>
Cellular Localization	Golgi apparatus . Golgi apparatus, trans-Golgi network membrane .		
Function	Function:Putative target protein of ADP-ribosylation factor. Involved in membrane ruffling.,similarity:Contains 1 AH domain.,subunit:Interacts with RAC1 by binding directly to it. Specifically binds to GTP-bound ARF1 and ARF6, but binds to RAC1.GTP and RAC1.GDP with similar affinities.,		

Validation Data



Western blot analysis of lysates from THP-1 cells, primary antibody was diluted at 1:1000, 4°over night

Contact information

Orders: order@immunoway.com  
Support: tech@immunoway.com  
Telephone: 877-594-3616 (Toll Free), 408-747-0185  
Website: http://www.immunoway.com  
Address: 2200 Ringwood Ave San Jose, CA 95131 USA



Please scan the QR code to access additional product information:  
**ARFP2 Rabbit pAb**