

EXOSX Rabbit pAb

CatalogNo: YN4010

| Key Features

Host Species

- Rabbit

Reactivity

- Human, Mouse

Applications

- WB

MW

- 97kD (Calculated)

Isotype

- IgG

| Recommended Dilution Ratios

WB 1:500-2000

| Storage

Storage* -15°C to -25°C/1 year (Do not lower than -25°C)

Formulation Liquid in PBS containing 50% glycerol, 0.5% BSA and 0.02% sodium azide.

| Basic Information

Clonality Polyclonal

| Immunogen Information

Immunogen Synthesized peptide derived from human EXOSX AA range: 391-441

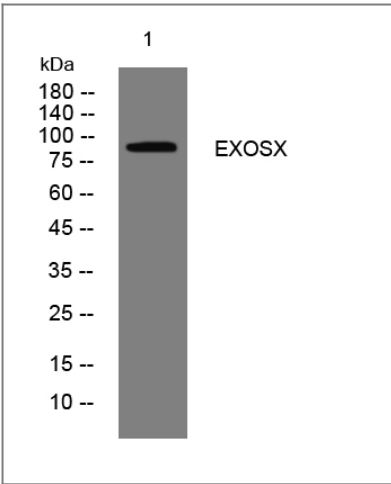
Specificity This antibody detects endogenous levels of EXOSX at Human/Mouse

| Target Information

Gene name EXOSC10 PMSCL PMSCL2 RRP6

Protein Name	EXOSX		
	Organism	Gene ID	UniProt ID
	Human	5394;	Q01780;
	Mouse	50912;	P56960;
Cellular Localization	Cytoplasm. Nucleus, nucleolus. Nucleus. Strongly enriched in the nucleolus and a small amount has been found in cytoplasm supporting the existence of a nucleolar RNA exosome complex form.		
Function	<p>Disease:Antibodies against PM/SCL are found in patients with polymyositis and/or scleroderma.,Function:Part of a post-splicing multiprotein complex involved in both mRNA nuclear export and mRNA surveillance. Involved in nonsense-mediated decay (NMD) of mRNAs containing premature stop codons. Component of the exosome 3'->5' exoribonuclease complex, a complex that degrades inherently unstable mRNAs containing AU-rich elements (AREs) within their 3' untranslated regions. Required for the 3'processing of the 7S pre-rRNA to the mature 5.8S rRNA. Could be an exonuclease (By similarity). Mediates the association of MTR4, C1D and MPP6 with the exosome and this complex is required for the maturation of 5.8S rRNA. Required for nucleolar localization of C1D.,similarity:Contains 1 3'-5' exonuclease domain.,similarity:Contains 1 HRDC domain.,subunit:Component of the exosome multienzyme ribonuclease complex composed of at least 11 proteins: EXOSC1/CSL4, EXOSC2/RRP4, EXOSC3/RRP40, EXOSC4/RRP41, EXOSC5/RRP46, EXOSC6/MTR3, EXOSC7/RRP42, EXOSC8/RRP43, EXOSC9/Scl-75, DIS3/RRP44, and EXOSC10/Scl-100 (only in the nuclear complex). Found in a mRNA decay complex with RENT1, RENT2 and RENT3B. Also associated with the GTPase Ran (By similarity). Interacts with PTGES2. Interacts with C1D. Forms a heterotrimeric complex with C1D and MPP6 in vitro.,</p>		

Validation Data



Western blot analysis of lysates from U2OS cells, primary antibody was diluted at 1:1000, 4°over night

Contact information

Orders: order@immunoway.com
Support: tech@immunoway.com
Telephone: 877-594-3616 (Toll Free), 408-747-0185
Website: <http://www.immunoway.com>
Address: 2200 Ringwood Ave San Jose, CA 95131 USA



Please scan the QR code
to access additional
product information:
EXOSX Rabbit pAb

For Research Use Only. Not for Use in Diagnostic Procedures.

[Antibody](#) | [ELISA Kits](#) | [Protein](#) | [Reagents](#)