

DCA15 Rabbit pAb

CatalogNo: YN4000

| Key Features

Host Species

- Rabbit

Reactivity

- Human, Mouse

Applications

- WB

MW

- 66kD (Calculated)

Isotype

- IgG

| Recommended Dilution Ratios

WB 1:500-2000

| Storage

Storage*

-15°C to -25°C/1 year (Do not lower than -25°C)

Formulation

Liquid in PBS containing 50% glycerol, 0.5% BSA and 0.02% sodium azide.

| Basic Information

Clonality

Polyclonal

| Immunogen Information

Immunogen

Synthesized peptide derived from human DCA15 AA range: 251-301

Specificity

This antibody detects endogenous levels of DCA15 at Human/Mouse

| Target Information

Gene name

DCAF15 C19orf72

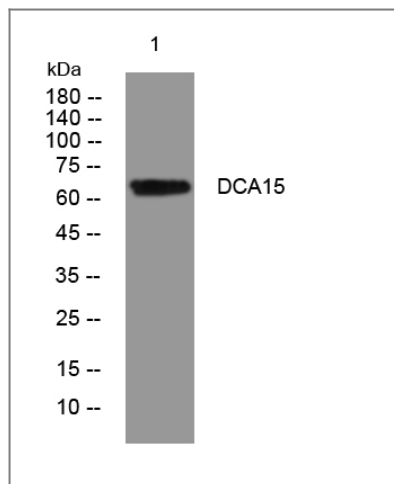
Protein Name DCA15

| Organism | Gene ID | UniProt ID |
|----------|-------------------------|-------------------------|
| Human | 90379; | Q66K64; |
| Mouse | 212123; | Q6PFH3; |

Function

Function:May be involved in ubiquitination and degradation through a DBB1-CUL4 E3 protein-ubiquitin ligase.,pathway:Protein modification; protein ubiquitination.,subunit:Interacts with DDB1 and CUL4A.,

Validation Data



Western blot analysis of lysates from HEK293 cells, primary antibody was diluted at 1:1000, 4°over night

Contact information

Orders: order@immunoway.com
Support: tech@immunoway.com
Telephone: 877-594-3616 (Toll Free), 408-747-0185
Website: <http://www.immunoway.com>
Address: 2200 Ringwood Ave San Jose, CA 95131 USA



Please scan the QR code to access additional product information:
DCA15 Rabbit pAb

For Research Use Only. Not for Use in Diagnostic Procedures.

[Antibody](#) | [ELISA Kits](#) | [Protein](#) | [Reagents](#)