

## VATE1 Rabbit pAb

CatalogNo: YN3965

### Key Features

#### Host Species

- Rabbit

#### Reactivity

- Human, Mouse, Rat

#### Applications

- WB

#### MW

- 25kD (Calculated)

#### Isotype

- IgG

### Storage

**Storage\*** -15°C to -25°C/1 year (Do not lower than -25°C)

**Formulation** Liquid in PBS containing 50% glycerol, 0.5% BSA and 0.02% sodium azide.

### Recommended Dilution Ratios

**WB 1:500-2000**

### Basic Information

**Clonality** Polyclonal

### Immunogen Information

**Immunogen** Synthesized peptide derived from human VATE1 AA range: 156-206

**Specificity** This antibody detects endogenous levels of VATE1 at Human/Mouse/Rat

### Target Information

**Gene name** ATP6V1E1 ATP6E ATP6E2

**Protein Name** VATE1

Organism	Gene ID	UniProt ID
Human	<a href="#">529</a> ;	<a href="#">P36543</a> ;
Mouse	<a href="#">11973</a> ;	<a href="#">P50518</a> ;
Rat	<a href="#">297566</a> ;	<a href="#">Q6PCU2</a> ;

**Cellular Localization**

Apical cell membrane ; Peripheral membrane protein . Cytoplasmic vesicle, secretory vesicle, synaptic vesicle membrane ; Peripheral membrane protein . Cytoplasmic vesicle, clathrin-coated vesicle membrane ; Peripheral membrane protein .

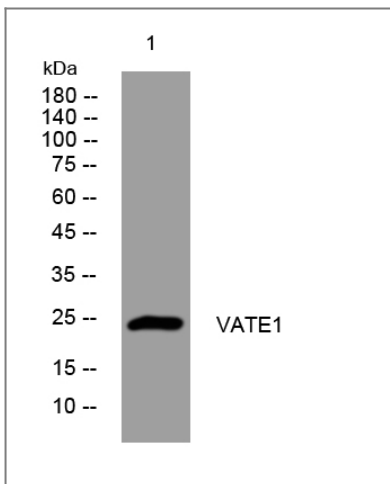
**Tissue specificity**

Kidney; localizes to early distal nephron, encompassing thick ascending limbs and distal convoluted tubules (at protein level) (PubMed:29993276). Ubiquitous (PubMed:12036578). High expression in the skin (PubMed:28065471).

**Function**

Function:Subunit of the peripheral V1 complex of vacuolar ATPase essential for assembly or catalytic function. V-ATPase is responsible for acidifying a variety of intracellular compartments in eukaryotic cells.,similarity:Belongs to the V-ATPase e subunit family.,subunit:V-ATPase is an heteromultimeric enzyme composed of a peripheral catalytic V1 complex (components A to H) attached to an integral membrane V0 proton pore complex (components: a, c, c', c'' and d).,tissue specificity:Ubiquitous.,

## Validation Data



Western blot analysis of lysates from HeLa cells, primary antibody was diluted at 1:1000, 4° over night

## Contact information

Orders: [order@immunoway.com](mailto:order@immunoway.com)  
Support: [tech@immunoway.com](mailto:tech@immunoway.com)  
Telephone: 877-594-3616 (Toll Free), 408-747-0185  
Website: <http://www.immunoway.com>  
Address: 2200 Ringwood Ave San Jose, CA 95131 USA



Please scan the QR code to access additional product information:  
**VATE1 Rabbit pAb**

