

ARP5L Rabbit pAb

CatalogNo: YN3962

Key Features

Host Species

- Rabbit

Reactivity

- Human, Mouse, Rat

Applications

- WB

MW

- 17kD (Calculated)

Isotype

- IgG

Recommended Dilution Ratios

WB 1:500-2000

Storage

Storage*

-15°C to -25°C/1 year (Do not lower than -25°C)

Formulation

Liquid in PBS containing 50% glycerol, 0.5% BSA and 0.02% sodium azide.

Basic Information

Clonality

Polyclonal

Immunogen Information

Immunogen

Synthesized peptide derived from human ARP5L AA range: 4-54

Specificity

This antibody detects endogenous levels of ARP5L at Human/Mouse/Rat

Target Information

Gene name

ARPC5L

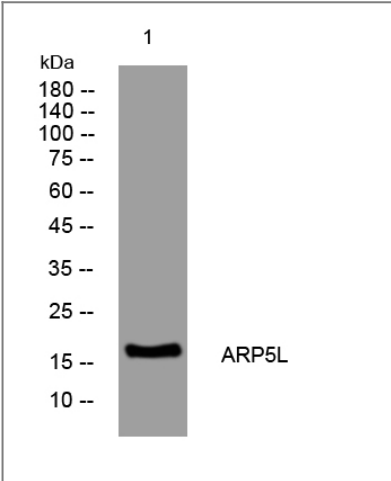
Protein Name ARP5L

Organism	Gene ID	UniProt ID
Human	81873;	Q9BPX5;
Mouse	74192;	Q9D898;
Rat	296710;	A1L108;

Cellular Localization Cytoplasm, cytoskeleton .

Function Function:May function as component of the Arp2/3 complex which is involved in regulation of actin polymerization and together with an activating nucleation-promoting factor (NPF) mediates the formation of branched actin networks.,similarity:Belongs to the ARPC5 family.,subunit:May be a component of the Arp2/3 complex in which it may replace ARPC5.,

| **Validation Data**



Western blot analysis of lysates from VEC cells, primary antibody was diluted at 1:1000, 4°over night

| **Contact information**

Orders: order@immunoway.com
Support: tech@immunoway.com
Telephone: 877-594-3616 (Toll Free), 408-747-0185
Website: http://www.immunoway.com
Address: 2200 Ringwood Ave San Jose, CA 95131 USA



Please scan the QR code to access additional product information:
ARP5L Rabbit pAb